

For Research Use Only

# CoraLite® Plus 488-conjugated ACE2 Monoclonal antibody



Catalog Number: CL488-66699

2 Publications

## Basic Information

Catalog Number:

CL488-66699

Size:

1000 µg/ml

Source:

Mouse

Isotype:

IgG1

Immunogen Catalog Number:

AG15554

GenBank Accession Number:

BC048094

GeneID (NCBI):

59272

UNIPROT ID:

Q9BYF1

Full Name:

angiotensin I converting enzyme  
(peptidyl-di-peptidase A) 2

Calculated MW:

805 aa, 92 kDa

Purification Method:

Protein G purification

CloneNo.:

2F12A4

Recommended Dilutions:

IF 1:50-1:500

Excitation/Emission maxima  
wavelengths:

493 nm / 522 nm

## Applications

Tested Applications:

FC (Intra), IF-P

Cited Applications:

IF, FC

Species Specificity:

Human, mouse

Cited Species:

human

Positive Controls:

IF : human kidney tissue,

## Background Information

ACE2 (Angiotensin-converting enzyme 2), also named as ACEH, is a zinc metalloprotease of the ACE family and a critical regulator of the reninangiotensin system. ACE2 has a more restricted tissue distribution than ACE, being found predominantly in the heart, kidneys, and testes although low levels have been detected in a variety of tissues (PMID:15983030). ACE2 has been shown to be a functional receptor of the human coronaviruses SARS-CoV and SARS-CoV-2 (PMID: 32142651). The expression level and expression pattern of human ACE2 in different tissues might be critical for the susceptibility, symptoms, and outcome of 2019-nCoV/SARS-CoV-2 infection (PMID: 32133153). It can be used as a potential therapeutic target of SARS-CoV-2 (PMID: 32125455). The calculated molecular weight of ACE2 is 92kDa but it migrates to 120kDa due to N-glycosylation (PMID:16166094). Sometimes, several cleaved fragments can also be detected as 75kDa, 50 kDa or 37kDa (PMID: 29561187, 22009550, 30759273). It has 2 isoforms produced by alternative splicing. This antibody is specific to ACE2.

## Notable Publications

Author	Pubmed ID	Journal	Application
Feng Xie	34665481	Adv Mater	FC
Shouwen Du	35045269	J Virol	IF

## Storage

Storage:

Store at -20°C. Avoid exposure to light. Stable for one year after shipment.

Storage Buffer:

PBS with 50% Glycerol, 0.05% Proclin300, 0.5% BSA, pH 7.3.

Aliquoting is unnecessary for -20°C storage

For technical support and original validation data for this product please contact:

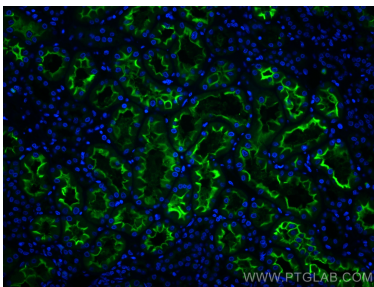
T: 4006900926

E: Proteintech-CN@ptglab.com

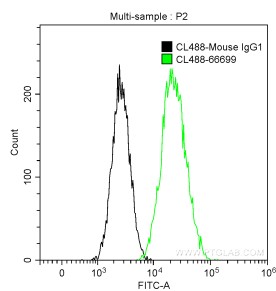
W: ptgcn.com

This product is exclusively available under Proteintech Group brand and is not available to purchase from any other manufacturer.

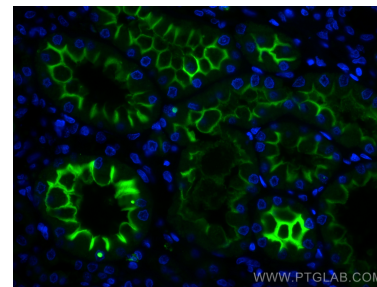
## Selected Validation Data



Immunofluorescent analysis of (4% PFA) fixed human kidney tissue using CoraLite® Plus 488 ACE2 antibody (CL488-66699, Clone: 2F12A4 ) at dilution of 1:200.



1X10<sup>6</sup> NIH/3T3 cells were stained with 1 ug CoraLite® Plus 488-conjugated Anti-Human ACE2 (CL488-66699, Clone:2F12A4) (green), and 1 ug Control Antibody. Cells were fixed with 90% MeOH.



Immunofluorescent analysis of (4% PFA) fixed human kidney tissue using CoraLite® Plus 488 ACE2 antibody (CL488-66699, Clone: 2F12A4 ) at dilution of 1:200.