

For Research Use Only

CoraLite® Plus 488-conjugated TOM20 Monoclonal antibody

Catalog Number: CL488-66777

5 Publications



Basic Information

Catalog Number:

CL488-66777

Concentration:

1000 µg/ml

Source:

Mouse

Isotype:

IgG2b

Immunogen Catalog Number:

AG2378

GenBank Accession Number:

BC000882

GeneID (NCBI):

9804

UNIPROT ID:

Q15388

Full Name:

translocase of outer mitochondrial membrane 20 homolog (yeast)

Calculated MW:

145 aa, 16 kDa

Observed MW:

16 kDa

Purification Method:

Protein A purification

CloneNo.:

1D6F5

Recommended Dilutions:

IF/ICC 1:50-1:500

Excitation/Emission maxima wavelengths:

493 nm / 522 nm

Applications

Tested Applications:

IF/ICC, FC (Intra)

Cited Applications:

IF

Species Specificity:

human

Cited Species:

human, mouse

Positive Controls:

IF/ICC : HeLa cells,

Background Information

TOM20, also named as KIAA0016, belongs to the Tom20 family. It is a central component of the receptor complex responsible for the recognition and translocation of cytosolically synthesized mitochondrial preproteins. Together with TOM22, TOM20 functions as the transit peptide receptor at the surface of the mitochondrion outer membrane and facilitates the movement of preproteins into the TOM40 translocation pore. TOM20 is characterized as major docking receptors to mediate the recognition by different mechanisms.

Notable Publications

Author	Pubmed ID	Journal	Application
Megha Rajendran	35718804	Cell Mol Life Sci	
Canghui Guo	39983849	Biochem Pharmacol	IF
Yena Cho	38838552	Redox Biol	IF

Storage

Storage:

Store at -20°C. Avoid exposure to light. Stable for one year after shipment.

Storage Buffer:

PBS with 50% glycerol, 0.05% Proclin300, 0.5% BSA, pH7.3

Aliquoting is unnecessary for -20°C storage

For technical support and original validation data for this product please contact:

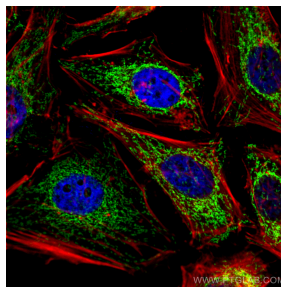
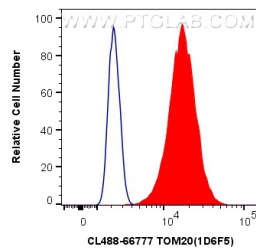
T: 4006900926

E: Proteintech-CN@ptglab.com

W: ptgcn.com

This product is exclusively available under Proteintech Group brand and is not available to purchase from any other manufacturer.

Selected Validation Data



1X10⁶ HeLa cells were intracellularly stained with 0.4 ug CoraLite® Plus 488 Anti-Human TOM20 (CL488-66777, Clone:1D6F5) (red), or 0.4 ug Mouse IgG2b Isotype Control (CL488-66360-3, Clone: K11B8C4B5) (blue). Cells were fixed with 4% PFA and permeabilized with Flow Cytometry Perm Buffer (PF00011-C).

Immunofluorescent analysis of (4% PFA) fixed HeLa cells using CoraLite® Plus 488 TOM20 antibody (CL488-66777, Clone: 1D6F5) at dilution of 1:200, CL594-Phalloidin (red).