

For Research Use Only

# CoraLite® Plus 488-conjugated JTV1 Monoclonal antibody



Catalog Number: CL488-66848

## Basic Information

<b>Catalog Number:</b> CL488-66848	<b>GenBank Accession Number:</b> BC002853	<b>Purification Method:</b> Protein A purification
<b>Size:</b> 1000 µg/ml	<b>GeneID (NCBI):</b> 7965	<b>CloneNo.:</b> 1D6B5
<b>Source:</b> Mouse	<b>UNIPROT ID:</b> Q13155	<b>Recommended Dilutions:</b> WB 1:500-1:1000
<b>Isotype:</b> IgG2b	<b>Full Name:</b> JTV1 gene	<b>Excitation/Emission maxima wavelengths:</b> 493 nm / 522 nm
<b>Immunogen Catalog Number:</b> AG0675	<b>Calculated MW:</b> 36 kDa	
	<b>Observed MW:</b> 32-36 kDa	

## Applications

<b>Tested Applications:</b> WB	<b>Positive Controls:</b> WB : Jurkat cells, HeLa cells
<b>Species Specificity:</b> Human, mouse, rat	

## Background Information

JTV1, also named p38, AIMP2, was first known as a factor associated with macromolecular protein complex, which consists several different aminoacyl-tRNA synthetases. JTV1 is a scaffold protein required for the assembly and stability of the multi-tRNA synthetase complex. JTV1 could act as a mediator of TGF-beta signaling and its functional importance in the control of MYC during lung differentiation. Blocks MDM2-mediated ubiquitination and degradation of p53/TP53. Functions as a proapoptotic factor.

## Storage

**Storage:**  
Store at -20°C. Avoid exposure to light. Stable for one year after shipment.  
**Storage Buffer:**  
PBS with 50% Glycerol, 0.05% Proclin300, 0.5% BSA, pH 7.3.  
Aliquoting is unnecessary for -20°C storage

For technical support and original validation data for this product please contact:

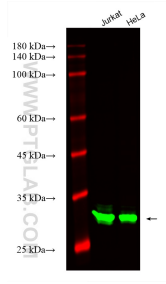
T: 4006900926

E: [Proteintech-CN@ptglab.com](mailto:Proteintech-CN@ptglab.com)

W: [ptgcn.com](http://ptgcn.com)

**This product is exclusively available under Proteintech Group brand and is not available to purchase from any other manufacturer.**

## Selected Validation Data



Various lysates were subjected to SDS PAGE followed by western blot with CL488-66848 (JTV1 antibody) at dilution of 1:800 incubated at room temperature for 1.5 hours.