

For Research Use Only

# CoraLite® Plus 488-conjugated C7 Monoclonal antibody



Catalog Number: CL488-66908

## Basic Information

<b>Catalog Number:</b> CL488-66908	<b>GenBank Accession Number:</b> BC063851	<b>Purification Method:</b> Protein G purification
<b>Size:</b> 1000 ug/ml	<b>GeneID (NCBI):</b> 730	<b>CloneNo.:</b> 1H9C4
<b>Source:</b> Mouse	<b>UNIPROT ID:</b> P10643	<b>Recommended Dilutions:</b> IF/ICC 1:50-1:500
<b>Isotype:</b> IgG1	<b>Full Name:</b> complement component 7	<b>Excitation/Emission maxima wavelengths:</b> 493 nm / 522 nm
<b>Immunogen Catalog Number:</b> AG12552	<b>Calculated MW:</b> 843 aa, 94 kDa	
	<b>Observed MW:</b> 100 kDa	

## Applications

<b>Tested Applications:</b> IF/ICC, FC (Intra)	<b>Positive Controls:</b> IF/ICC : HepG2 cells,
<b>Species Specificity:</b> human	

## Background Information

C7, a single-chain plasma glycoprotein, is a component of the complement system. It is a constituent of the membrane attack complex (MAC) that plays a key role in the innate and adaptive immune response by forming pores in the plasma membrane of target cells. C7 serves as a membrane anchor. People with C7 deficiency are prone to bacterial infection.

## Storage

**Storage:**  
Store at -20°C. Avoid exposure to light. Stable for one year after shipment.  
**Storage Buffer:**  
PBS with 50% Glycerol, 0.05% Proclin300, 0.5% BSA, pH 7.3.  
Aliquoting is unnecessary for -20°C storage

For technical support and original validation data for this product please contact:

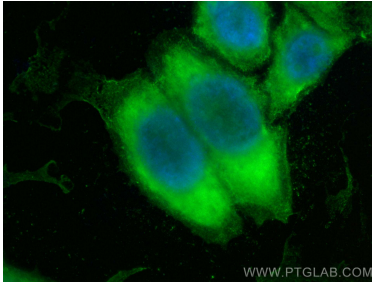
T: 4006900926

E: [Proteintech-CN@ptglab.com](mailto:Proteintech-CN@ptglab.com)

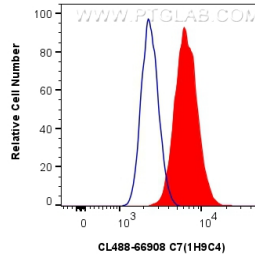
W: [ptgcn.com](http://ptgcn.com)

This product is exclusively available under Proteintech Group brand and is not available to purchase from any other manufacturer.

## Selected Validation Data



Immunofluorescent analysis of (-20°C Ethanol) fixed HepG2 cells using CoraLite® Plus 488 C7 antibody (CL488-66908, Clone: 1H9C4) at dilution of 1:200.



1x10<sup>6</sup> HepG2 cells were intracellularly stained with 0.8 ug CoraLite® Plus 488-conjugated C7 Monoclonal antibody (CL488-66908, Clone:1H9C4) (red), or 0.8 ug CoraLite® Plus 488 Mouse IgG1 Isotype Control (1F8D3) (CL488-66360-1, Clone: 1F8D3) (blue). Cells were fixed with 4% PFA and permeabilized with Flow Cytometry Perm Buffer (PF00011-C).