

For Research Use Only

CoraLite® Plus 488-conjugated YES1 Monoclonal antibody



Catalog Number: CL488-67196

Featured Product

Basic Information

Catalog Number:

CL488-67196

Size:

1000 µg/ml

Source:

Mouse

Isotype:

IgG2a

Immunogen Catalog Number:

AG5016

GenBank Accession Number:

BC048960

GeneID (NCBI):

7525

UNIPROT ID:

P07947

Full Name:

v-yes-1 Yamaguchi sarcoma viral
oncogene homolog 1

Calculated MW:

61 kDa

Observed MW:

62 kDa

Purification Method:

Protein A purification

CloneNo.:

1A12E7

Excitation/Emission maxima
wavelengths:

493 nm / 522 nm

Applications

Tested Applications:

FC (Intra)

Species Specificity:

human, rat

Background Information

YES1, also named as p61-Yes and YES, belongs to the protein kinase superfamily, Tyr protein kinase family and SRC subfamily. It promotes infectivity of *Neisseria gonorrhoeae* in epithelial cells by phosphorylating MCP/CD46. YES1 catalyzes the reaction: $ATP + a \text{ [protein]-L-tyrosine} = ADP + a \text{ [protein]-L-tyrosine phosphate}$.

Storage

Storage:

Store at -20°C. Avoid exposure to light. Stable for one year after shipment.

Storage Buffer:

PBS with 50% Glycerol, 0.05% Proclin300, 0.5% BSA, pH 7.3.

Aliquoting is unnecessary for -20°C storage

For technical support and original validation data for this product please contact:

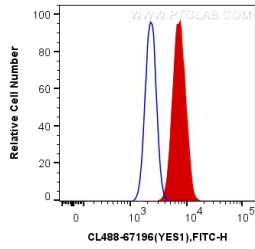
T: 4006900926

E: Proteintech-CN@ptglab.com

W: ptgcn.com

This product is exclusively available under Proteintech Group brand and is not available to purchase from any other manufacturer.

Selected Validation Data



1X10⁶ HepG2 cells were intracellularly stained with 0.4 ug CoraLite® Plus 488 Anti-Human YES1 (CL488-67196, Clone:1A12E7) (red), or 0.4 ug Mouse IgG2a Isotype Control (CL488-66360-2, Clone: K11A1B2A2) (blue). Cells were fixed with 4% PFA and permeabilized with Flow Cytometry Perm Buffer (PF00011-C).