

For Research Use Only

CoraLite® Plus 488-conjugated TPM4 Monoclonal antibody



Catalog Number: CL488-67244

Featured Product

Basic Information

Catalog Number:

CL488-67244

Size:

1000 µg/ml

Source:

Mouse

Isotype:

IgG1

Immunogen Catalog Number:

AG6947

GenBank Accession Number:

BC037576

GeneID (NCBI):

7171

ENSEMBL Gene ID:

ENSG00000167460

UNIPROT ID:

P67936

Full Name:

tropomyosin 4

Calculated MW:

248 aa, 29 kDa

Observed MW:

32-35 kDa

Purification Method:

Protein G purification

CloneNo.:

2E12D12

Recommended Dilutions:

WB 1:1000-1:4000

Excitation/Emission maxima
wavelengths:

493 nm / 522 nm

Applications

Tested Applications:

WB

Species Specificity:

Human, mouse, rat, pig

Positive Controls:

WB : rat skeletal muscle tissue, mouse skeletal muscle tissue

Background Information

TPM4 is a member of tropomyosins (TPMs), a multi-gene family of actin-binding proteins present in all eukaryotic cells. In muscle, TPMs are responsible for mediating contraction via regulation of the actin-myosin interaction. As to non-muscle cells, its proposed role is to stabilize the actin filaments by modulating the interaction with proteins that are responsible for the regulation of actin dynamics. The form of TPM4 in muscle has a higher molecular weight than the form found in non-muscle cells.

Storage

Storage:

Store at -20°C. Avoid exposure to light. Stable for one year after shipment.

Storage Buffer:

PBS with 50% Glycerol, 0.05% Proclin300, 0.5% BSA, pH 7.3.

Aliquoting is unnecessary for -20°C storage

For technical support and original validation data for this product please contact:

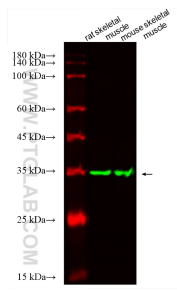
T: 4006900926

E: Proteintech-CN@ptglab.com

W: ptgcn.com

This product is exclusively available under Proteintech Group brand and is not available to purchase from any other manufacturer.

Selected Validation Data



Various lysates were subjected to SDS PAGE followed by western blot with CL488-67244 (TPM4 antibody) at dilution of 1:1000 incubated at room temperature for 1.5 hours.