

For Research Use Only

CoraLite® Plus 488-conjugated TMEM230 Monoclonal antibody



Catalog Number: **CL488-67247**

Basic Information

Catalog Number:

CL488-67247

Size:

1000 µg/ml

Source:

Mouse

Isotype:

IgG2b

Immunogen Catalog Number:

AG15080

GenBank Accession Number:

BC011990

GeneID (NCBI):

29058

UNIPROT ID:

Q96A57

Full Name:

chromosome 20 open reading frame

30

Calculated MW:

183 aa, 20 kDa

Observed MW:

16 kDa

Purification Method:

Protein A purification

CloneNo.:

4D3A7

Excitation/Emission maxima

wavelengths:

493 nm / 522 nm

Applications

Tested Applications:

FC (Intra)

Species Specificity:

Human, Mouse, Rat

Background Information

Storage

Storage:

Store at -20°C. Avoid exposure to light. Stable for one year after shipment.

Storage Buffer:

PBS with 50% Glycerol, 0.05% Proclin300, 0.5% BSA, pH 7.3.

Aliquoting is unnecessary for -20°C storage

For technical support and original validation data for this product please contact:

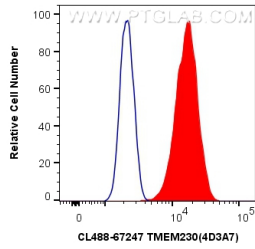
T: 4006900926

E: Proteintech-CN@ptglab.com

W: ptgcn.com

This product is exclusively available under Proteintech Group brand and is not available to purchase from any other manufacturer.

Selected Validation Data



1X10⁶ Neuro-2a cells were intracellularly stained with 0.4 ug CoraLite® Plus 488 Anti-Human TMEM230 (CL488-67247, Clone:4D3A7) (red), or 0.4 ug Control Antibody. Cells were fixed with 4% PFA and permeabilized with Flow Cytometry Perm Buffer (PF00011-C).