

For Research Use Only

CoraLite® Plus 488-conjugated Alpha 2-Antiplasmin Monoclonal antibody



Catalog Number: **CL488-67308**

Basic Information

| | | |
|--|---|---|
| Catalog Number: CL488-67308 | GenBank Accession Number: BC031592 | Purification Method: Protein G purification |
| Size: 1000 µg/ml | GeneID (NCBI): 5345 | CloneNo.: 3F6C3 |
| Source: Mouse | UNIPROT ID: P08697 | Recommended Dilutions: IF 1:50-1:500 |
| Isotype: IgG1 | Full Name: serpin peptidase inhibitor, clade F (alpha-2 antiplasmin, pigment epithelium derived factor), member 2 | Excitation/Emission maxima wavelengths: 493 nm / 522 nm |
| Immunogen Catalog Number: AG4095 | Calculated MW: 491 aa, 55 kDa | |

Applications

| | |
|---------------------------------------|--|
| Tested Applications: IF/ICC | Positive Controls: IF : HepG2 cells, |
| Species Specificity: Human | |

Background Information

Storage

Storage:
Store at -20°C. Avoid exposure to light. Stable for one year after shipment.
Storage Buffer:
PBS with 50% Glycerol, 0.05% Proclin300, 0.5% BSA, pH 7.3.
Aliquoting is unnecessary for -20°C storage

For technical support and original validation data for this product please contact:

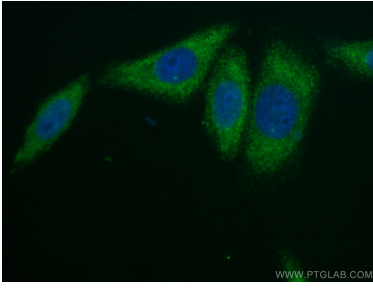
T: 4006900926

E: Proteintech-CN@ptglab.com

W: ptgcn.com

This product is exclusively available under Proteintech Group brand and is not available to purchase from any other manufacturer.

Selected Validation Data



Immunofluorescent analysis of (-20°C Ethanol) fixed HepG2 cells using CoraLite® Plus 488-conjugated Alpha 2-Antiplasmin antibody (CL488-67308, Clone: 3F6C3) at dilution of 1:100.