

For Research Use Only

CoraLite® Plus 488-conjugated KL Monoclonal antibody



Catalog Number: **CL488-67331**

Basic Information

Catalog Number:

CL488-67331

Size:

1000 µg/ml

Source:

Mouse

Isotype:

IgG1

Immunogen Catalog Number:

AG27838

GenBank Accession Number:

NM_004795

GeneID (NCBI):

9365

UNIPROT ID:

Q9UEF7

Full Name:

klotho

Calculated MW:

116 kDa

Observed MW:

125-135 kDa

Purification Method:

Protein G purification

CloneNo.:

4D1G11

Recommended Dilutions:

IF-P 1:50-1:500

Excitation/Emission maxima

wavelengths:

493 nm / 522 nm

Applications

Tested Applications:

IF-P, FC (Intra)

Species Specificity:

human, mouse, rat

Positive Controls:

IF-P: mouse kidney tissue,

Background Information

Storage

Storage:

Store at -20°C. Avoid exposure to light.

Storage Buffer:

PBS with 50% Glycerol, 0.05% Proclin300, 0.5% BSA, pH 7.3.

Aliquoting is unnecessary for -20°C storage

For technical support and original validation data for this product please contact:

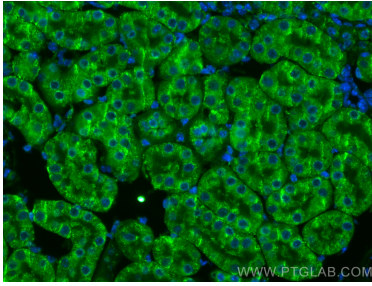
T: 4006900926

E: Proteintech-CN@ptglab.com

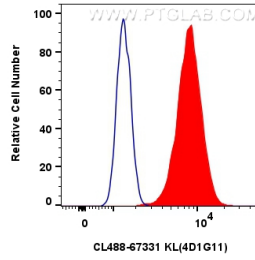
W: ptgcn.com

This product is exclusively available under Proteintech Group brand and is not available to purchase from any other manufacturer.

Selected Validation Data



Immunofluorescent analysis of (4% PFA) fixed paraffin-embedded mouse kidney tissue using CoraLite® Plus 488 KL antibody (CL488-67331, Clone: 4D1G11) at dilution of 1:200. Heat mediated antigen retrieval with Tris-EDTA buffer (pH 9.0).



1x10⁶ ACHN cells were intracellularly stained with 0.8 ug CoraLite® Plus 488 KL Monoclonal Antibody (CL488-67331, Clone:4D1G11)(red), or 0.8 ug CoraLite® Plus 488 Mouse IgG1 Isotype Control (MOPC-21) (CL488-65124, Clone: MOPC-21) (blue). Cells were fixed with 4% PFA and permeabilized with Flow Cytometry Perm Buffer (PF00011-C).