

For Research Use Only

# CoraLite® Plus 488-conjugated SYNPO Monoclonal antibody



Catalog Number: CL488-67339

## Basic Information

<b>Catalog Number:</b> CL488-67339	<b>GenBank Accession Number:</b> BC146665	<b>Purification Method:</b> Protein G purification
<b>Size:</b> 1000 µg/ml	<b>GeneID (NCBI):</b> 11346	<b>CloneNo.:</b> 1E1B1
<b>Source:</b> Mouse	<b>UNIPROT ID:</b> Q8N3V7	<b>Recommended Dilutions:</b> IF 1:50-1:500
<b>Isotype:</b> IgG1	<b>Full Name:</b> synaptopodin	<b>Excitation/Emission maxima wavelengths:</b> 493 nm / 522 nm
<b>Immunogen Catalog Number:</b> AG15089	<b>Calculated MW:</b> 929 aa, 99 kDa	
	<b>Observed MW:</b> 100-110 kDa	

## Applications

<b>Tested Applications:</b> IF-P	<b>Positive Controls:</b> IF : mouse brain tissue,
<b>Species Specificity:</b> Human, mouse, rat, pig	

## Background Information

Synaptopodin is a actin-associated protein expressed in mature dendritic spines and renal podocytes. Several isoforms of synaptopodin have been reported: the 100 kDa neural form and 110 kDa renal form. 44-45 kDa may represent the degradation product of synaptopodin. As a podocyte specific protein, synaptopodin expression level was decreased in kidney but increased in the urinary podocytes from patients with preeclampsia, indicating that synaptopodin is a useful marker for preeclampsia. (15841212, 10555072)

## Storage

**Storage:**  
Store at -20°C. Avoid exposure to light. Stable for one year after shipment.  
**Storage Buffer:**  
PBS with 50% Glycerol, 0.05% Proclin300, 0.5% BSA, pH 7.3.  
Aliquoting is unnecessary for -20°C storage

For technical support and original validation data for this product please contact:

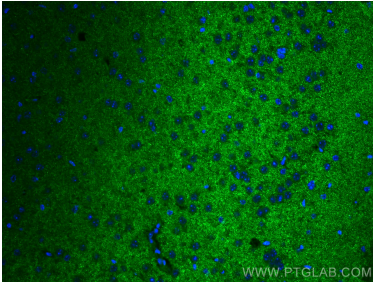
T: 4006900926

E: [Proteintech-CN@ptglab.com](mailto:Proteintech-CN@ptglab.com)

W: [ptgcn.com](http://ptgcn.com)

**This product is exclusively available under Proteintech Group brand and is not available to purchase from any other manufacturer.**

## Selected Validation Data



Immunofluorescent analysis of (4% PFA) fixed mouse brain tissue using CoraLite® Plus 488 SYNPO antibody (CL488-67339, Clone: 1E1B1 ) at dilution of 1:200.