

For Research Use Only

# CoraLite® Plus 488-conjugated SEC63 Monoclonal antibody



Catalog Number: CL488-67352

## Basic Information

<b>Catalog Number:</b> CL488-67352	<b>GenBank Accession Number:</b> BC047221	<b>Purification Method:</b> Protein G purification
<b>Size:</b> 1000 µg/ml	<b>GeneID (NCBI):</b> 11231	<b>CloneNo.:</b> 1C10E1
<b>Source:</b> Mouse	<b>UNIPROT ID:</b> Q9UGP8	<b>Recommended Dilutions:</b> IF/ICC 1:50-1:500
<b>Isotype:</b> IgG1	<b>Full Name:</b> SEC63 homolog (S. cerevisiae)	<b>Excitation/Emission maxima wavelengths:</b> 493 nm / 522 nm
<b>Immunogen Catalog Number:</b> AG5783	<b>Calculated MW:</b> 88 kDa	
	<b>Observed MW:</b> 90 kDa	

## Applications

<b>Tested Applications:</b> IF/ICC	<b>Positive Controls:</b> IF/ICC : HEK-293 cells,
<b>Species Specificity:</b> Human	

## Background Information

SEC63 is a integral ER membrane protein. SEC63 and SEC62 form a dimeric complex and play a central role in translocation of nascent and newly synthesized precursor polypeptides into the ER. Mutations in the gene encoding SEC63 cause polycystic liver disease in humans. The intact SEC63 protein is usually detected around 83-90 kDa, while smaller cleavage products can be observed by autophagy proteolysis (PMID: 25052096)

## Storage

**Storage:**  
Store at -20°C. Avoid exposure to light. Stable for one year after shipment.  
**Storage Buffer:**  
PBS with 50% Glycerol, 0.05% Proclin300, 0.5% BSA, pH 7.3.  
Aliquoting is unnecessary for -20°C storage

For technical support and original validation data for this product please contact:

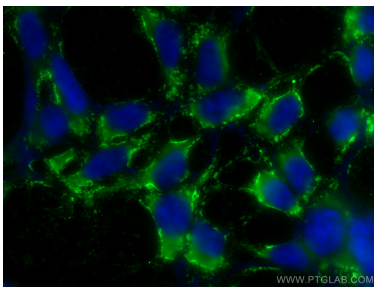
T: 4006900926

E: [Proteintech-CN@ptglab.com](mailto:Proteintech-CN@ptglab.com)

W: [ptgcn.com](http://ptgcn.com)

**This product is exclusively available under Proteintech Group brand and is not available to purchase from any other manufacturer.**

## Selected Validation Data



Immunofluorescent analysis of (-20°C Ethanol) fixed HEK-293 cells using CoraLite® Plus 488 SEC63 antibody (CL488-67352, Clone: 1C10E1 ) at dilution of 1:200.