

For Research Use Only

CoraLite® Plus 488-conjugated RGS14 Monoclonal antibody



Catalog Number:CL488-67394

Basic Information

Catalog Number: CL488-67394	GenBank Accession Number: BC014094	Purification Method: Protein G purification
Size: 1000 µg/ml	GeneID (NCBI): 10636	CloneNo.: 1C1B2
Source: Mouse	UNIPROT ID: O43566	Recommended Dilutions: IF/ICC 1:50-1:500
Isotype: IgG1	Full Name: regulator of G-protein signaling 14	Excitation/Emission maxima wavelengths: 493 nm / 522 nm
Immunogen Catalog Number: AG9477	Calculated MW: 566 aa, 61 kDa	
	Observed MW: 61 kDa	

Applications

Tested Applications: IF/ICC, FC (Intra)	Positive Controls: IF/ICC : HeLa cells,
Species Specificity: human, mouse, rat	

Background Information

RGS14, a member of the R12 subfamily of RGS proteins, is highly expressed in the brain and is a natural suppressor of CA2 hippocampal synaptic plasticity and learning and memory. RGS14 was first identified as a complex scaffolding protein with an unconventional domain structure that allows it to interact with various protein binding partners. RGS14 contains one RGS domain, two Raf-like Ras-binding domains (RBDs), and one GoLoco domain. The protein attenuates the signaling activity of G-proteins by binding, through its GoLoco domain, to specific types of activated, GTP-bound G alpha subunits. Acting as a GTPase activating protein (GAP), the protein increases the rate of conversion of the GTP to GDP.

Storage

Storage:
Store at -20°C. Avoid exposure to light.
Storage Buffer:
PBS with 50% Glycerol, 0.05% Proclin300, 0.5% BSA, pH 7.3.
Aliquoting is unnecessary for -20°C storage

For technical support and original validation data for this product please contact:

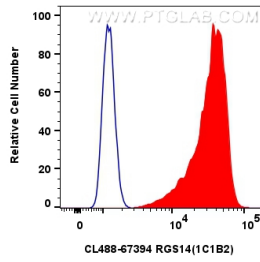
T: 4006900926

E: Proteintech-CN@ptglab.com

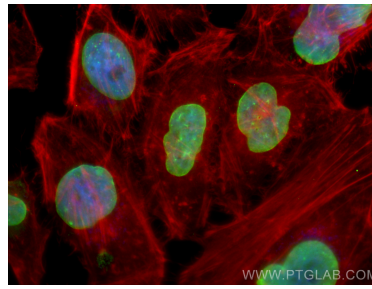
W: ptgcn.com

This product is exclusively available under Proteintech Group brand and is not available to purchase from any other manufacturer.

Selected Validation Data



1×10^6 HeLa cells were intracellularly stained with 0.4 μ g CoraLite® Plus 488 Rgs14 Monoclonal Antibody (CL488-67394, Clone:1C1B2)(red), or 0.4 μ g CoraLite® Plus 488 Mouse IgG1 Isotype Control (MOPC-21) (CL488-65124, Clone: MOPC-21) (blue). Cells were fixed with 4% PFA and permeabilized with Flow Cytometry Perm Buffer (PF00011-C).



Immunofluorescent analysis of (4% PFA) fixed HeLa cells using CoraLite® Plus 488 RGS14 antibody (CL488-67394, Clone: 1C1B2) at dilution of 1:200, CL594-Phalloidin (red).