

For Research Use Only

CoraLite® Plus 488-conjugated CCT4 Monoclonal antibody



Catalog Number: CL488-67455

Basic Information

Catalog Number:

CL488-67455

Size:

1000 µg/ml

Source:

Mouse

Isotype:

IgG1

Immunogen Catalog Number:

AG17084

GenBank Accession Number:

BC106934

GeneID (NCBI):

10575

UNIPROT ID:

P50991

Full Name:

chaperonin containing TCP1, subunit 4 (delta)

Calculated MW:

539 aa, 58 kDa

Observed MW:

55-58 kDa

Purification Method:

Protein G purification

CloneNo.:

3C6A6

Recommended Dilutions:

IF/ICC 1:50-1:500

Excitation/Emission maxima

wavelengths:

493 nm / 522 nm

Applications

Tested Applications:

IF/ICC, FC (Intra)

Species Specificity:

human, mouse, pig, rabbit

Positive Controls:

IF/ICC : U2OS cells,

Background Information

T-complex protein 1 subunit delta (CCT4) is a component of the chaperonin-containing T-complex (TRiC), a molecular chaperone complex that assists the folding of proteins upon ATP hydrolysis (PMID:25467444). As part of the TRiC complex, it may play a role in regulating telomere maintenance (PMID:25467444) and assembly of BBSome, a complex involved in ciliogenesis regulating transports vesicles to the cilia (PMID:20080638). CCT4 has 2 isoforms produced by alternative splicing with the MW of 55 kDa and 58 kDa.

Storage

Storage:

Store at -20°C. Avoid exposure to light.

Storage Buffer:

PBS with 50% Glycerol, 0.05% Proclin300, 0.5% BSA, pH 7.3.

Aliquoting is unnecessary for -20°C storage

For technical support and original validation data for this product please contact:

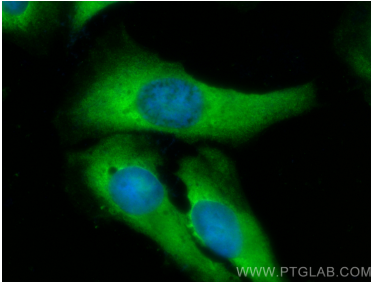
T: 4006900926

E: Proteintech-CN@ptglab.com

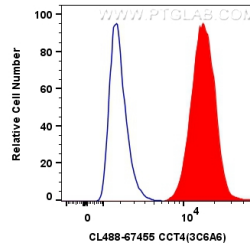
W: ptgcn.com

This product is exclusively available under Proteintech Group brand and is not available to purchase from any other manufacturer.

Selected Validation Data



Immunofluorescent analysis of (-20°C Ethanol) fixed U2OS cells using CoraLite® Plus 488 CCT4 antibody (CL488-67455, Clone: 3C6A6) at dilution of 1:200.



1x10⁶ A549 cells were intracellularly stained with 0.8 ug CoraLite® Plus 488 Cct4 Monoclonal Antibody (CL488-67455, Clone:3C6A6)(red), or 0.8 ug CoraLite® Plus 488 Mouse IgG1 Isotype Control (MOPC-21) (CL488-65124, Clone: MOPC-21) (blue). Cells were fixed with 4% PFA and permeabilized with Flow Cytometry Perm Buffer (PF00011-C).