

For Research Use Only

CoraLite® Plus 488-conjugated SF3B3 Monoclonal antibody



Catalog Number: CL488-67469

Basic Information

Catalog Number: CL488-67469	GenBank Accession Number: BC003146	Purification Method: Protein A purification
Size: 1000 µg/ml	GeneID (NCBI): 23450	CloneNo.: 2H7F5
Source: Mouse	UNIPROT ID: Q15393	Recommended Dilutions: IF 1:50-1:500
Isotype: IgG2b	Full Name: splicing factor 3b, subunit 3, 130kDa	Excitation/Emission maxima wavelenghts: 493 nm / 522 nm
Immunogen Catalog Number: AG6315	Calculated MW: 136 kDa	
	Observed MW: 130-135 kDa	

Applications

Tested Applications: IF/ICC	Positive Controls: IF : HepG2 cells, HeLa cells
Species Specificity: Human, mouse, rat	

Background Information

Introns are removed from nuclear pre-mRNA in 2-step transesterification reactions. Splicing occurred in a large ribonucleoprotein particle, called the spliceosome. Spliceosomal intermediate complexes form on pre-mRNA in the order E, A, B, and C, with the catalytic reactions occurring in complex C. U2 small nuclear ribonucleoproteins are one of the proteins essential for spliceosome assembly and mRNA splicing. Functional U2 snRNP is composed of a 12S unit and 2 splicing factors, SF3A, which is composed of 3 proteins, and SF3B, which composed of 4 proteins. SF3B3 is one of SF3B, and it's required for 'A' complex assembly formed by the stable binding of U2 snRNP to the branchpoint sequence(BPS) in pre-mRNA.

Storage

Storage:
Store at -20°C. Avoid exposure to light. Stable for one year after shipment.
Storage Buffer:
PBS with 50% Glycerol, 0.05% Proclin300, 0.5% BSA, pH 7.3.
Aliquoting is unnecessary for -20°C storage

For technical support and original validation data for this product please contact:

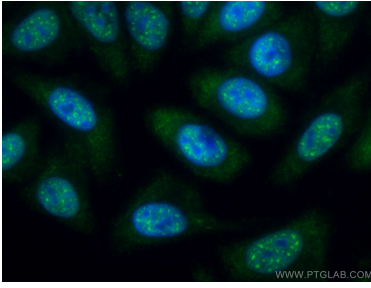
T: 4006900926

E: Proteintech-CN@ptglab.com

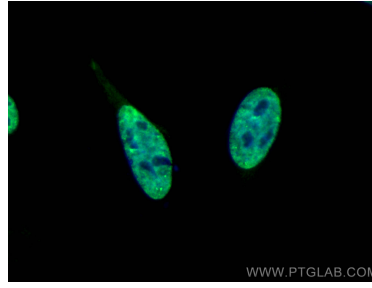
W: ptgcn.com

This product is exclusively available under Proteintech Group brand and is not available to purchase from any other manufacturer.

Selected Validation Data



Immunofluorescent analysis of (-20°C Methanol) fixed HepG2 cells using CoraLite® Plus 488 SF3B3 antibody (CL488-67469, Clone: 2H7F5) at dilution of 1:200.



Immunofluorescent analysis of (4% PFA) fixed HeLa cells using CoraLite® Plus 488 SF3B3 antibody (CL488-67469, Clone: 2H7F5) at dilution of 1:200.