

For Research Use Only

# CoraLite® Plus 488-conjugated RHOC Monoclonal antibody



Catalog Number: **CL488-67542**

## Basic Information

<b>Catalog Number:</b> CL488-67542	<b>GenBank Accession Number:</b> BC007245	<b>Purification Method:</b> Protein G purification
<b>Size:</b> 1000 µg/ml	<b>GeneID (NCBI):</b> 389	<b>CloneNo.:</b> 1G1C1
<b>Source:</b> Mouse	<b>UNIPROT ID:</b> P08134	<b>Recommended Dilutions:</b> IF 1:50-1:500
<b>Isotype:</b> IgG1	<b>Full Name:</b> ras homolog gene family, member C	<b>Excitation/Emission maxima wavelengths:</b> 493 nm / 522 nm
<b>Immunogen Catalog Number:</b> AG14633	<b>Calculated MW:</b> 22 kDa	

## Applications

<b>Tested Applications:</b> IF/ICC	<b>Positive Controls:</b> IF : HeLa cells,
<b>Species Specificity:</b> Human, mouse, rat	

## Background Information

Ras homolog family member C (RHOC) encodes a Rho-related GTP-binding protein, which belongs to small GTPase superfamily and also Rho family. RHOC. Regulates a signal transduction pathway linking plasma membrane receptors to the assembly of focal adhesions and actin stress fibers. Expression of RHOC contributes to metastatic phenotype of melanoma cells and is associated with multiple cancers including gastric carcinomas, ovarian carcinomas and breast cancer as well.

## Storage

**Storage:**  
Store at -20°C. Avoid exposure to light.  
**Storage Buffer:**  
PBS with 50% Glycerol, 0.05% Proclin300, 0.5% BSA, pH 7.3.  
Aliquoting is unnecessary for -20°C storage

For technical support and original validation data for this product please contact:

T: 4006900926

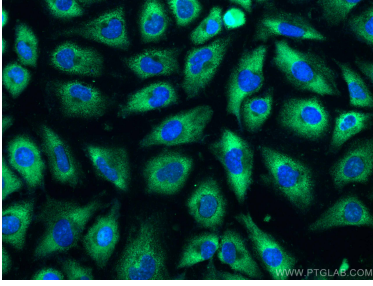
E: [Proteintech-CN@ptglab.com](mailto:Proteintech-CN@ptglab.com)

W: [ptgcn.com](http://ptgcn.com)

**This product is exclusively available under Proteintech Group brand and is not available to purchase from any other manufacturer.**

---

## Selected Validation Data



Immunofluorescent analysis of (4% PFA) fixed HeLa cells using CoraLite® Plus 488 RHOC antibody (CL488-67542, Clone: 1G1C1) at dilution of 1:100.