

For Research Use Only

CoraLite® Plus 488-conjugated ATP1B3 Monoclonal antibody



Catalog Number:CL488-67554

Basic Information

Catalog Number:

CL488-67554

Size:

1000 µg/ml

Source:

Mouse

Isotype:

IgG1

Immunogen Catalog Number:

AG30127

GenBank Accession Number:

BC011835

GeneID (NCBI):

483

UNIPROT ID:

P54709

Full Name:

ATPase, Na⁺/K⁺ transporting, beta 3 polypeptide

Calculated MW:

32 kDa

Observed MW:

38-43 kDa

Purification Method:

Protein G purification

CloneNo.:

1H9C1

Recommended Dilutions:

IF/ICC 1:50-1:500

Excitation/Emission maxima wavelenghts:

493 nm / 522 nm

Applications

Tested Applications:

IF/ICC

Species Specificity:

Human

Positive Controls:

IF/ICC : HEK-293 cells,

Background Information

ATP1B3 (also known as CD298) is the β 3 subunit of Na⁺/K⁺-ATPase which functions to maintain sodium and potassium gradients across membranes involved in cellular activities. ATP1B3 is a glycosylated protein and there are fully and intermediately glycosylated forms of ATP1B3 in mammalian cells. The predicted MW of ATP1B3 is around 32 kDa, while various forms (38-43 kDa) can be observed due to the different level of glycosylation (PMID: 30792309, 16339171, 17176442).

Storage

Storage:

Store at -20°C. Avoid exposure to light. Stable for one year after shipment.

Storage Buffer:

PBS with 50% Glycerol, 0.05% Proclin300, 0.5% BSA, pH 7.3.

Aliquoting is unnecessary for -20°C storage

For technical support and original validation data for this product please contact:

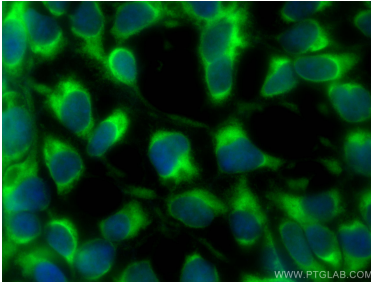
T: 4006900926

E: Proteintech-CN@ptglab.com

W: ptgcn.com

This product is exclusively available under Proteintech Group brand and is not available to purchase from any other manufacturer.

Selected Validation Data



Immunofluorescent analysis of (-20°C Ethanol) fixed HEK-293 cells using CoraLite® Plus 488 ATP1B3 antibody (CL488-67554, Clone: 1H9C1) at dilution of 1:200.