

For Research Use Only

# CoraLite® Plus 488-conjugated PICALM Monoclonal antibody



Catalog Number: CL488-67564

## Basic Information

Catalog Number:

CL488-67564

Size:

1000 µg/ml

Source:

Mouse

Isotype:

IgG1

Immunogen Catalog Number:

AG29512

GenBank Accession Number:

BC064357

GeneID (NCBI):

8301

UNIPROT ID:

Q13492

Full Name:

phosphatidylinositol binding clathrin  
assembly protein

Calculated MW:

71 kDa

Observed MW:

60-70 kDa

Purification Method:

Protein G purification

CloneNo.:

1F6G7

Recommended Dilutions:

IF/ICC 1:50-1:500

Excitation/Emission maxima

wavelengths:

493 nm / 522 nm

## Applications

Tested Applications:

IF/ICC, FC (Intra)

Species Specificity:

human, mouse, rat

Positive Controls:

IF/ICC : HeLa cells,

## Background Information

PICALM (Phosphatidyl Inositol Clathrin Assembly Lymphoid Myeloid protein) is a ubiquitously expressed protein that plays a role in clathrin-mediated endocytosis. PICALM also affects the internalization and trafficking of SNAREs and modulates macroautophagy. PICALM is a highly validated genetic risk factor for Alzheimer's disease (AD). The long isoform of human PICALM has 22 exons (encoding PICALML), while the short isoform lacks exon 14 (encoding PICALMS). (PMID: 33397371, PMID: 26075887, PMID: 26005850)

## Storage

Storage:

Store at -20°C. Avoid exposure to light. Stable for one year after shipment.

Storage Buffer:

PBS with 50% Glycerol, 0.05% Proclin300, 0.5% BSA, pH 7.3.

Aliquoting is unnecessary for -20°C storage

For technical support and original validation data for this product please contact:

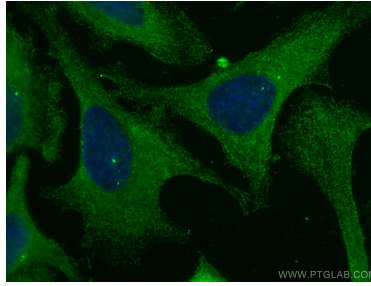
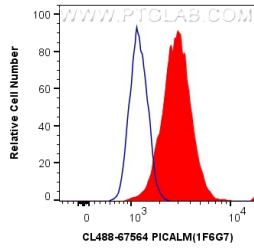
T: 4006900926

E: [Proteintech-CN@ptglab.com](mailto:Proteintech-CN@ptglab.com)

W: [ptgcn.com](http://ptgcn.com)

This product is exclusively available under Proteintech Group brand and is not available to purchase from any other manufacturer.

## Selected Validation Data



$1 \times 10^6$  HEK-293 cells were intracellularly stained with 0.4  $\mu$ g CoraLite® Plus 488 Anti-Human PICALM (CL488-67564, Clone:1F6G7) (red), or 0.4  $\mu$ g Control Antibody. Cells were fixed with 4% PFA and permeabilized with Flow Cytometry Perm Buffer (PF00011-C).

Immunofluorescent analysis of (-20°C Methanol) fixed HeLa cells using CoraLite® Plus 488 PICALM antibody (CL488-67564, Clone: 1F6G7) at dilution of 1:200.