

For Research Use Only

CoraLite® Plus 488-conjugated RPS14 Monoclonal antibody



Catalog Number: CL488-67566

Basic Information

Catalog Number: CL488-67566	GenBank Accession Number: BC003401	Purification Method: Protein A purification
Size: 1000 µg/ml	GeneID (NCBI): 6208	CloneNo.: 3D5H5
Source: Mouse	UNIPROT ID: P62263	Recommended Dilutions: IF 1:50-1:500
Isotype: IgG2b	Full Name: ribosomal protein S14	Excitation/Emission maxima wavelengths: 493 nm / 522 nm
Immunogen Catalog Number: AG30032	Calculated MW: 16 kDa	
	Observed MW: 16 kDa	

Applications

Tested Applications: IF/ICC	Positive Controls: IF : HepG2 cells,
Species Specificity: Human, mouse, rat	

Background Information

The mammalian ribosome consists of 4 RNA species and approximately 80 different proteins. The ribosomal proteins are encoded by complex gene families that include at least 1 active intron-containing gene and multiple processed pseudogenes [PMID 3785212]. The RPS14 gene, encoding a ribosomal protein that belongs to the 40S ribosome, and mapping to the commonly deleted region (CDR) of the 5q- syndrome, shows haploinsufficiency in the CD34+ cells of patients with this disorder [PMID:22430631].

Storage

Storage:
Store at -20°C. Avoid exposure to light.
Storage Buffer:
PBS with 50% Glycerol, 0.05% Proclin300, 0.5% BSA, pH 7.3.
Aliquoting is unnecessary for -20°C storage

For technical support and original validation data for this product please contact:

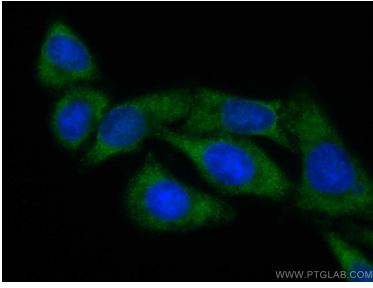
T: 4006900926

E: Proteintech-CN@ptglab.com

W: ptgcn.com

This product is exclusively available under Proteintech Group brand and is not available to purchase from any other manufacturer.

Selected Validation Data



Immunofluorescent analysis of (-20°C Ethanol) fixed HepG2 cells using CoraLite® Plus 488 RPS14 antibody (CL488-67566, Clone: 3D5H5) at dilution of 1:200.