

For Research Use Only

CoraLite® Plus 488-conjugated SERPIND1 Monoclonal antibody



Catalog Number: **CL488-67602**

Basic Information

Catalog Number:

CL488-67602

Size:

1000 µg/ml

Source:

Mouse

Isotype:

IgG1

Immunogen Catalog Number:

AG26351

GenBank Accession Number:

BC035028

GeneID (NCBI):

3053

UNIPROT ID:

P05546

Full Name:

serpin peptidase inhibitor, clade D
(heparin cofactor), member 1

Calculated MW:

499 aa, 57 kDa

Purification Method:

Protein G purification

CloneNo.:

2C1E1

Recommended Dilutions:

IF/ICC 1:50-1:500

Excitation/Emission maxima
wavelengths:

493 nm / 522 nm

Applications

Tested Applications:

IF/ICC

Species Specificity:

Human

Positive Controls:

IF/ICC : HepG2 cells,

Background Information

Storage

Storage:

Store at -20°C. Avoid exposure to light. Stable for one year after shipment.

Storage Buffer:

PBS with 50% Glycerol, 0.05% Proclin300, 0.5% BSA, pH 7.3.

Aliquoting is unnecessary for -20°C storage

For technical support and original validation data for this product please contact:

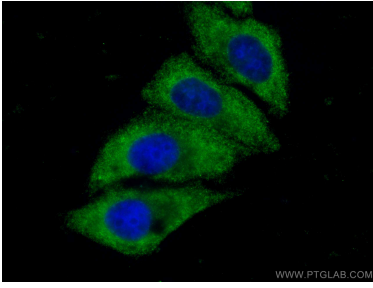
T: 4006900926

E: Proteintech-CN@ptglab.com

W: ptgcn.com

This product is exclusively available under Proteintech Group brand and is not available to purchase from any other manufacturer.

Selected Validation Data



Immunofluorescent analysis of (-20°C Ethanol)
fixed HepG2 cells using CoraLite® Plus 488
SERPIND1 antibody (CL488-67602, Clone: 2C1E1)
at dilution of 1:200.