

For Research Use Only

CoraLite® Plus 488-conjugated ICAM2 Monoclonal antibody



Catalog Number: **CL488-67628**

Basic Information

Catalog Number: CL488-67628	GenBank Accession Number: BC003097	Purification Method: Protein A purification
Size: 1000 µg/ml	GeneID (NCBI): 3384	CloneNo.: 1H3C6
Source: Mouse	UNIPROT ID: P13598	Excitation/Emission maxima wavelengths: 493 nm / 522 nm
Isotype: IgG2a	Full Name: intercellular adhesion molecule 2	
Immunogen Catalog Number: AG29441	Calculated MW: 31 kDa	
	Observed MW: 55-60 kDa	

Applications

Tested Applications:
FC (Intra)

Species Specificity:
Human

Background Information

ICAM2 is a cell adhesion protein having important roles in cell migration, especially during inflammation when leukocytes cross the endothelium. Initially described as a receptor for lymphocyte function-associated antigen-1 (LFA1), ICAM2 may play a role in lymphocyte recirculation by blocking LFA-1-dependent cell adhesion. It mediates adhesive interactions important for antigen-specific immune response, NK-cell mediated clearance, lymphocyte recirculation, and other cellular interactions important for immune response and surveillance.

Storage

Storage:
Store at -20°C. Avoid exposure to light. Stable for one year after shipment.

Storage Buffer:
PBS with 50% Glycerol, 0.05% Proclin300, 0.5% BSA, pH 7.3.

Aliquoting is unnecessary for -20°C storage

For technical support and original validation data for this product please contact:

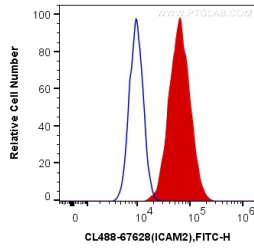
T: 4006900926

E: Proteintech-CN@ptglab.com

W: ptgcn.com

This product is exclusively available under Proteintech Group brand and is not available to purchase from any other manufacturer.

Selected Validation Data



1X10⁶ HUVEC cells were intracellularly stained with 0.4 ug CoraLite® Plus 488 Anti-Human ICAM2 (CL488-67628, Clone:1H3C6) (red), or 0.4 ug Control Antibody. Cells were fixed with 4% PFA and permeabilized with Flow Cytometry Perm Buffer (PF00011-C).