

For Research Use Only

CoraLite® Plus 488-conjugated PI3 Kinase p85 Beta Monoclonal antibody



Catalog Number: **CL488-67644**

Basic Information

Catalog Number: CL488-67644	GenBank Accession Number: BC014170	Purification Method: Protein A purification
Size: 1000 µg/ml	GeneID (NCBI): 5296	CloneNo.: 2B3B6
Source: Mouse	UNIPROT ID: O00459	Recommended Dilutions: IF/ICC 1:50-1:500
Isotype: IgG2b	Full Name: phosphoinositide-3-kinase, regulatory subunit 2 (beta)	Excitation/Emission maxima wavelengths: 493 nm / 522 nm
Immunogen Catalog Number: AG14369	Calculated MW: 728 aa, 82 kDa	
	Observed MW: 85 kDa	

Applications

Tested Applications: IF/ICC, FC (Intra)	Positive Controls: IF/ICC : HeLa cells,
Species Specificity: human, mouse, rat	

Background Information

PI3 Kinase p85 is also named as PIK3R2 and belongs to the PI3K p85 subunit family. PI3 Kinase p85 is a regulatory subunit of phosphoinositide-3-kinase (PI3K) which is a kinase that phosphorylates phosphatidylinositol 4,5-bisphosphate to generate PIP3. PI3 Kinase p85 binds to activated (phosphorylated) protein-tyrosine kinases through its SH2 domain, and then acts as an adapter to mediate the association of the p110 catalytic unit to the plasma membrane. It promotes nuclear translocation of XBP1 isoform 2 in a ER stress or insulin-dependent manner during metabolic overloading in the liver and hence plays a role in glucose tolerance improvement (PMID:23604317).

Storage

Storage:
Store at -20°C. Avoid exposure to light.
Storage Buffer:
PBS with 50% Glycerol, 0.05% Proclin300, 0.5% BSA, pH 7.3.
Aliquoting is unnecessary for -20°C storage

For technical support and original validation data for this product please contact:

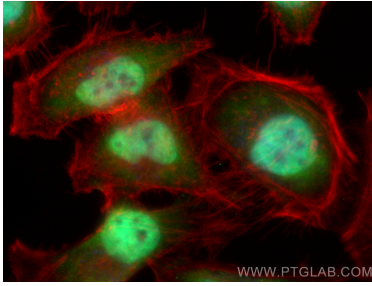
T: 4006900926

E: Proteintech-CN@ptglab.com

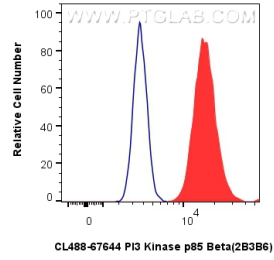
W: ptgcn.com

This product is exclusively available under Proteintech Group brand and is not available to purchase from any other manufacturer.

Selected Validation Data



Immunofluorescent analysis of (4% PFA) fixed HeLa cells using Coralite® Plus 488 PI3 Kinase p85 Beta antibody (CL488-67644, Clone: 2B3B6) at dilution of 1:200, CL594-Phalloidin (red).



1x10⁶ HeLa cells were intracellularly stained with 0.8 ug Coralite® Plus 488 PI3 Kinase P85 Beta Monoclonal Antibody (CL488-67644, Clone:2B3B6) (red), or 0.8 ug Coralite® Plus 488 Mouse IgG2b Isotype Control (MPC-11) (CL488-65128, Clone: MPC-11) (blue). Cells were fixed with 4% PFA and permeabilized with Flow Cytometry Perm Buffer (PF00011-C).