

For Research Use Only

# CoraLite® Plus 488-conjugated GSTT1 Monoclonal antibody



Catalog Number: CL488-67645

## Basic Information

<b>Catalog Number:</b> CL488-67645	<b>GenBank Accession Number:</b> BC007065	<b>Purification Method:</b> Protein A purification
<b>Size:</b> 1000 µg/ml	<b>GeneID (NCBI):</b> 2952	<b>CloneNo.:</b> 1A4C11
<b>Source:</b> Mouse	<b>UNIPROT ID:</b> P30711	<b>Recommended Dilutions:</b> IF 1:50-1:500
<b>Isotype:</b> IgG2b	<b>Full Name:</b> glutathione S-transferase theta 1	<b>Excitation/Emission maxima wavelengths:</b> 493 nm / 522 nm
<b>Immunogen Catalog Number:</b> AG8573	<b>Calculated MW:</b> 240 aa, 27 kDa	
	<b>Observed MW:</b> 28 kDa, 30 kDa	

## Applications

<b>Tested Applications:</b> IF-P	<b>Positive Controls:</b> IF : mouse liver tissue,
<b>Species Specificity:</b> Human, mouse	

## Background Information

GSTT1 belongs to the GST superfamily and Theta family. It is a conjugation of reduced glutathione to a wide number of exogenous and endogenous hydrophobic electrophiles. GSTT1 acts on 1,2-epoxy-3-(4-nitrophenoxy)propane, phenethylisothiocyanate 4-nitrobenzyl chloride and 4-nitrophenethyl bromide. It displays glutathione peroxidase activity with cumene hydroperoxide. GSTM1 and GSTT1 has been suggested as a risk factor in various cancers. GSTT1 is important in the detoxification of unidentified xenobiotics in the large intestine.

## Storage

**Storage:**  
Store at -20°C. Avoid exposure to light. Stable for one year after shipment.  
**Storage Buffer:**  
PBS with 50% Glycerol, 0.05% Proclin300, 0.5% BSA, pH 7.3.  
Aliquoting is unnecessary for -20°C storage

For technical support and original validation data for this product please contact:

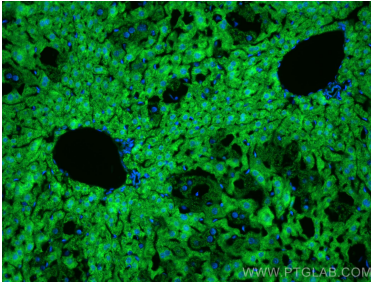
T: 4006900926

E: [Proteintech-CN@ptglab.com](mailto:Proteintech-CN@ptglab.com)

W: [ptgcn.com](http://ptgcn.com)

**This product is exclusively available under Proteintech Group brand and is not available to purchase from any other manufacturer.**

## Selected Validation Data



Immunofluorescent analysis of (4% PFA) fixed mouse liver tissue using CoraLite® Plus 488 GSTT1 antibody (CL488-67645, Clone: 1A4C11) at dilution of 1:200.