

For Research Use Only

# CoraLite® Plus 488-conjugated SLC6A12 Monoclonal antibody



Catalog Number: CL488-67700

## Basic Information

Catalog Number:

CL488-67700

Size:

1000 µg/ml

Source:

Mouse

Isotype:

IgG2a

Immunogen Catalog Number:

AG18962

GenBank Accession Number:

BC126215

GeneID (NCBI):

6539

UNIPROT ID:

P48065

Full Name:

solute carrier family 6  
(neurotransmitter transporter,  
betaine/GABA), member 12

Calculated MW:

614 aa, 69 kDa

Observed MW:

70 kDa

Purification Method:

Protein A purification

CloneNo.:

2C1G4

Recommended Dilutions:

IF/ICC 1:50-1:500

Excitation/Emission maxima  
wavelengths:

493 nm / 522 nm

## Applications

Tested Applications:

IF/ICC, FC (Intra)

Species Specificity:

human, mouse, rat

Positive Controls:

IF/ICC : Caco-2 cells,

## Background Information

## Storage

Storage:

Store at -20°C. Avoid exposure to light. Stable for one year after shipment.

Storage Buffer:

PBS with 50% Glycerol, 0.05% Proclin300, 0.5% BSA, pH 7.3.

Aliquoting is unnecessary for -20°C storage

For technical support and original validation data for this product please contact:

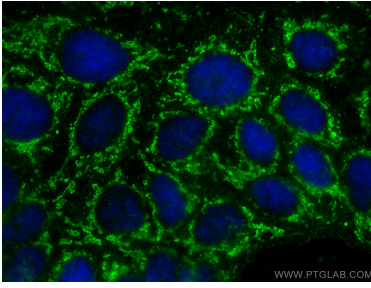
T: 4006900926

E: [Proteintech-CN@ptglab.com](mailto:Proteintech-CN@ptglab.com)

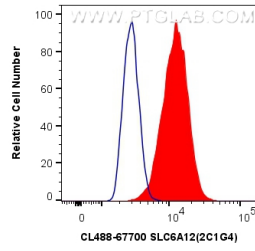
W: [ptgcn.com](http://ptgcn.com)

This product is exclusively available under Proteintech Group brand and is not available to purchase from any other manufacturer.

## Selected Validation Data



Immunofluorescent analysis of (-20°C Ethanol) fixed Caco-2 cells using CoraLite® Plus 488 SLC6A12 antibody (CL488-67700, Clone: 2C1G4) at dilution of 1:200.



1X10<sup>6</sup> MDA-MB-231 cells were intracellularly stained with 0.8 ug CoraLite® Plus 488 Anti-Human SLC6A12 (CL488-67700, Clone:2C1G4) (red), or 0.8 ug Control Antibody. Cells were fixed with 4% PFA and permeabilized with Flow Cytometry Perm Buffer (PF00011-C).