

For Research Use Only

CoraLite® Plus 488-conjugated Alix Monoclonal antibody



Catalog Number: CL488-67715

Basic Information

Catalog Number: CL488-67715	GenBank Accession Number: BC020066	Purification Method: Protein G purification
Size: 1000 µg/ml	GeneID (NCBI): 10015	CloneNo.: 1H9D9
Source: Mouse	UNIPROT ID: Q8WUM4	Recommended Dilutions: IF 1:50-1:500
Isotype: IgG1	Full Name: programmed cell death 6 interacting protein	Excitation/Emission maxima wavelengths: 493 nm / 522 nm
Immunogen Catalog Number: AG30437	Calculated MW: 868 aa, 96 kDa	
	Observed MW: 100 kDa	

Applications

Tested Applications: IF/ICC	Positive Controls: IF : HeLa cells,
Species Specificity: Human, Mouse, Rat	

Background Information

ALG-2-interacting protein 1 (ALIX), also known as AIP1 or Hp95, is encoded by PDCD6IP gene and is involved in cell death through mechanisms involving its binding partner ALG-2 (apoptosis-linked gene-2). ALG-2 is a 22-kDa protein containing five serially repetitive EF-hand structures and is defined as a regulator of calcium-induced apoptosis following endoplasmic reticulum (ER) stress. ALIX interacts with ALG-2 through its C-terminal proline-rich region and participates in formation of multivesicular bodies. Recent findings suggest that ALIX is a critical component of caspase 9 activation and apoptosis triggered by calcium.

Storage

Storage:
Store at -20°C. Avoid exposure to light. Stable for one year after shipment.
Storage Buffer:
PBS with 50% Glycerol, 0.05% Proclin300, 0.5% BSA, pH 7.3.
Aliquoting is unnecessary for -20°C storage

For technical support and original validation data for this product please contact:

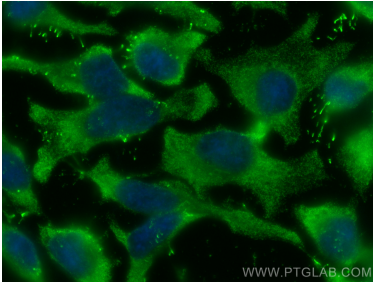
T: 4006900926

E: Proteintech-CN@ptglab.com

W: ptgcn.com

This product is exclusively available under Proteintech Group brand and is not available to purchase from any other manufacturer.

Selected Validation Data



Immunofluorescent analysis of (-20°C Ethanol) fixed HeLa cells using CoraLite® Plus 488 Alix antibody (CL488-67715, Clone: 1H9D9) at dilution of 1:200.