

For Research Use Only

CoraLite® Plus 488-conjugated IFI16 Monoclonal antibody



Catalog Number: CL488-67790

Basic Information

Catalog Number: CL488-67790	GenBank Accession Number: BC017059	Purification Method: Protein G purification
Size: 1000 µg/ml	GeneID (NCBI): 3428	CloneNo.: 1C10D7
Source: Mouse	UNIPROT ID: Q16666	Recommended Dilutions: IF/ICC 1:200-1:800
Isotype: IgG1	Full Name: interferon, gamma-inducible protein 16	Excitation/Emission maxima wavelengths: 493 nm / 522 nm
Immunogen Catalog Number: AG30314	Calculated MW: 729 aa, 82 kDa	
	Observed MW: 85-95 kDa	

Applications

Tested Applications: IF/ICC	Positive Controls: IF/ICC : HeLa cells,
Species Specificity: Human	

Background Information

IFI16 is a member of a family of interferon-inducible nuclear proteins involved in transcriptional regulation functions as a transcriptional repressor. IFI16 may be involved in TP53-mediated transcriptional activation by enhancing TP53 sequence-specific DNA binding and modulating TP53 phosphorylation status. It has been reported that IFI16 participates in the regulation of autophagy, TP53-mediated cell death and innate immune response.

Storage

Storage:
Store at -20°C. Avoid exposure to light. Stable for one year after shipment.
Storage Buffer:
PBS with 50% Glycerol, 0.05% Proclin300, 0.5% BSA, pH 7.3.
Aliquoting is unnecessary for -20°C storage

For technical support and original validation data for this product please contact:

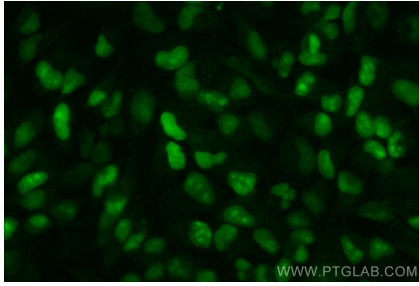
T: 4006900926

E: Proteintech-CN@ptglab.com

W: ptgcn.com

This product is exclusively available under Proteintech Group brand and is not available to purchase from any other manufacturer.

Selected Validation Data



Immunofluorescent analysis of (4% PFA) fixed HeLa cells using CoraLite® Plus 488 IF1.6 antibody (CL488-67790, Clone: 1C10D7) at dilution of 1:400.