

For Research Use Only

CoraLite® Plus 488-conjugated Synaptophysin Monoclonal antibody



Catalog Number:CL488-67864

Basic Information

Catalog Number: CL488-67864	GenBank Accession Number: BC064550	Purification Method: Protein G purification
Size: 1000 µg/ml	GeneID (NCBI): 6855	CloneNo.: 4E12C4
Source: Mouse	UNIPROT ID: P08247	Recommended Dilutions: IF 1:50-1:500
Isotype: IgG1	Full Name: synaptophysin	Excitation/Emission maxima wavelengths: 493 nm / 522 nm
Immunogen Catalog Number: AG11803	Calculated MW: 313 aa, 34 kDa	

Applications

Tested Applications: FC (Intra), IF-P	Positive Controls: IF : mouse brain tissue,
Species Specificity: Human, Pig, Mouse, Rat	

Background Information

Synaptophysin (SYP, also known as major synaptic vesicle protein p38) is a 38-kDa integral membrane glycoprotein that regulates synaptic vesicle endocytosis. It is the most abundant synaptic vesicle protein by mass. Synaptophysin is present in neuroendocrine cells and neurons that participate in synaptic transmission. Synaptophysin is a useful marker for identification of neuroendocrine cells and neoplasms. (PMID: 3010302; 21658579)

Storage

Storage:
Store at -20°C. Avoid exposure to light. Stable for one year after shipment.
Storage Buffer:
PBS with 50% Glycerol, 0.05% Proclin300, 0.5% BSA, pH 7.3.
Aliquoting is unnecessary for -20°C storage

For technical support and original validation data for this product please contact:

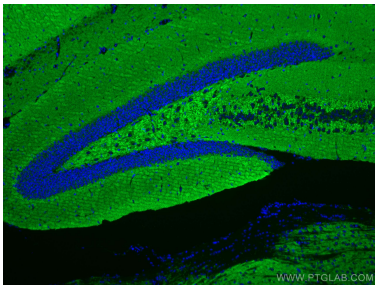
T: 4006900926

E: Proteintech-CN@ptglab.com

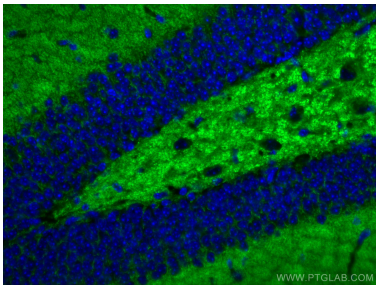
W: ptgcn.com

This product is exclusively available under Proteintech Group brand and is not available to purchase from any other manufacturer.

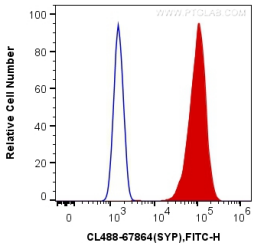
Selected Validation Data



Immunofluorescent analysis of (4% PFA) fixed mouse brain tissue using CoraLite® Plus 488 Synaptophysin antibody (CL488-67864, Clone: 4E12C4) at dilution of 1:200.



Immunofluorescent analysis of (4% PFA) fixed mouse brain tissue using CoraLite® Plus 488 Synaptophysin antibody (CL488-67864, Clone: 4E12C4) at dilution of 1:200.



1X10⁶ PC-12 cells were intracellularly stained with 0.4 ug CoraLite® Plus 488 Anti-Human Synaptophysin (CL488-67864, Clone:4E12C4) (red), or 0.4 ug Mouse IgG1 Isotype Control (CL488-66360, Clone: T1F8D3F10) (blue). Cells were fixed with 4% PFA and permeabilized with Flow Cytometry Perm Buffer (PF00011-C).