

For Research Use Only

# CoraLite® Plus 488-conjugated KDM1B Monoclonal antibody



Catalog Number: **CL488-67886**

## Basic Information

Catalog Number:

CL488-67886

Size:

1000 µg/ml

Source:

Mouse

Isotype:

IgG2b

Immunogen Catalog Number:

AG30672

GenBank Accession Number:

NM\_001364614

GeneID (NCBI):

221656

UNIPROT ID:

Q8NB78

Full Name:

amine oxidase (flavin containing)

domain 1

Calculated MW:

92 kDa

Observed MW:

92 kDa

Purification Method:

Protein A purification

CloneNo.:

1E1A3

Excitation/Emission maxima  
wavelengths:

493 nm / 522 nm

## Applications

Tested Applications:

FC (Intra)

Species Specificity:

Human, rat, mouse

## Background Information

### Storage

Storage:

Store at -20°C. Avoid exposure to light. Stable for one year after shipment.

Storage Buffer:

PBS with 50% Glycerol, 0.05% Proclin300, 0.5% BSA, pH 7.3.

Aliquoting is unnecessary for -20°C storage

For technical support and original validation data for this product please contact:

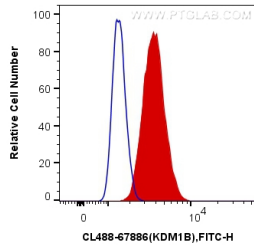
T: 4006900926

E: [Proteintech-CN@ptglab.com](mailto:Proteintech-CN@ptglab.com)

W: [ptgcn.com](http://ptgcn.com)

**This product is exclusively available under Proteintech Group brand and is not available to purchase from any other manufacturer.**

## Selected Validation Data



1X10<sup>6</sup> SW 1990 cells were intracellularly stained with 0.4 ug CoraLite® Plus 488 Anti-HUMAN KDM1B (CL488-67886, Clone:1E1A3) (red), or 0.4 ug Control Antibody. Cells were fixed and permeabilized with Transcription Factor Staining Buffer Kit (PF00011).