

For Research Use Only

CoraLite® Plus 488-conjugated KPNA3 Monoclonal antibody



Catalog Number: **CL488-67892**

Basic Information

Catalog Number:

CL488-67892

Size:

1000 µg/ml

Source:

Mouse

Isotype:

IgG2a

Immunogen Catalog Number:

AG27767

GenBank Accession Number:

BC017355

GeneID (NCBI):

3839

UNIPROT ID:

O00505

Full Name:

karyopherin alpha 3 (importin alpha 4)

Calculated MW:

58 kDa

Observed MW:

58 kDa

Purification Method:

Protein A purification

CloneNo.:

1D3D2

Recommended Dilutions:

IF/ICC 1:50-1:500

Excitation/Emission maxima

wavelengths:

493 nm / 522 nm

Applications

Tested Applications:

IF/ICC

Species Specificity:

Human, rat, mouse

Positive Controls:

IF/ICC : HepG2 cells,

Background Information

karyopherin subunit alpha 3 (KPNA3) is a member of the importin alpha family which can transport molecules between the nucleus and cytoplasm. It is ubiquitous expressed in brain, testis and esophagus. KPNA3 is associated with many severe diseases such as hepatocellular Carcinoma (PMID: 31417635), schizophrenia, major depression and opiate dependence (PMID: 22960338). The molecular weight of KPNA3 is about 58 kDa.

Storage

Storage:

Store at -20°C. Avoid exposure to light. Stable for one year after shipment.

Storage Buffer:

PBS with 50% Glycerol, 0.05% Proclin300, 0.5% BSA, pH 7.3.

Aliquoting is unnecessary for -20°C storage

For technical support and original validation data for this product please contact:

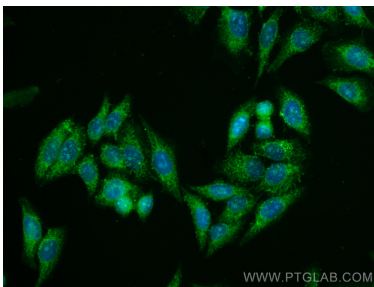
T: 4006900926

E: Proteintech-CN@ptglab.com

W: ptgcn.com

This product is exclusively available under Proteintech Group brand and is not available to purchase from any other manufacturer.

Selected Validation Data



Immunofluorescent analysis of (-20°C Methanol) fixed HepG2 cells using CoraLite® Plus 488 KPNA3 antibody (CL488-67892, Clone: 1D3D2) at dilution of 1:200.