

For Research Use Only

CoraLite® Plus 488-conjugated TRAPA/SSR1 Monoclonal antibody



Catalog Number: CL488-67925

Basic Information

Catalog Number: CL488-67925	GenBank Accession Number: BC007710	Purification Method: Protein G purification
Size: 1000 µg/ml	GeneID (NCBI): 6745	CloneNo.: 1F2D7
Source: Mouse	UNIPROT ID: P43307	Recommended Dilutions: IF-P 1:50-1:500
Isotype: IgG1	Full Name: signal sequence receptor, alpha	Excitation/Emission maxima wavelengths: 493 nm / 522 nm
Immunogen Catalog Number: AG30832	Calculated MW: 34 kDa	
	Observed MW: 34 kDa	

Applications

Tested Applications: IF-P	Positive Controls: IF-P: human ovary tumor tissue,
Species Specificity: Human	

Background Information

TRAPA (translocon-associated protein subunit alpha), also known as SSR1 (signal sequence receptor subunit alpha), is a 34-kDa single-spanning membrane glycoprotein of the endoplasmic reticulum (ER) (PMID: 8050590). It is a part of the tetrameric TRAP complex (TRAP-alpha, TRAP-beta, TRAP-delta and TRAP-gamma) which functions in regulating the retention of ER resident proteins (PMID: 7916687). The TRAP complex is also involved in endoplasmic reticulum-associated degradation (ERAD) (PMID: 17380188).

Storage

Storage:
Store at -20°C. Avoid exposure to light. Stable for one year after shipment.
Storage Buffer:
PBS with 50% Glycerol, 0.05% Proclin300, 0.5% BSA, pH 7.3.
Aliquoting is unnecessary for -20°C storage

For technical support and original validation data for this product please contact:

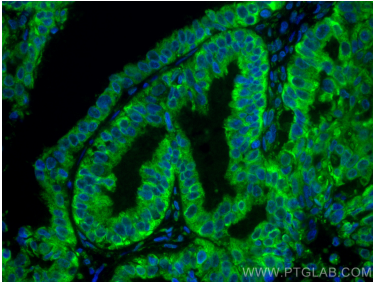
T: 4006900926

E: Proteintech-CN@ptglab.com

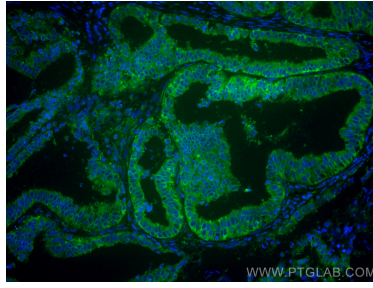
W: ptgcn.com

This product is exclusively available under Proteintech Group brand and is not available to purchase from any other manufacturer.

Selected Validation Data



Immunofluorescent analysis of (4% PFA) fixed human ovary tumor tissue using CoraLite® Plus 488 TRAPA/SSR1 antibody (CL488-67925, Clone: 1F2D7) at dilution of 1:200.



Immunofluorescent analysis of (4% PFA) fixed human ovary tumor tissue using CoraLite® Plus 488 TRAPA/SSR1 antibody (CL488-67925, Clone: 1F2D7) at dilution of 1:200.