

For Research Use Only

# CoraLite® Plus 488-conjugated RPA1 Monoclonal antibody



Catalog Number: **CL488-67973**

## Basic Information

Catalog Number:

CL488-67973

Size:

1000 µg/ml

Source:

Mouse

Isotype:

IgG1

Immunogen Catalog Number:

AG28239

GenBank Accession Number:

BC018126

GeneID (NCBI):

6117

UNIPROT ID:

P27694

Full Name:

replication protein A1, 70kDa

Calculated MW:

616 aa, 68 kDa

Observed MW:

68 kDa

Purification Method:

Protein G purification

CloneNo.:

1G3F11

Excitation/Emission maxima  
wavelengths:

493 nm / 522 nm

## Applications

Tested Applications:

FC (Intra)

Species Specificity:

Human, Rat

## Background Information

### Storage

Storage:

Store at -20°C. Avoid exposure to light. Stable for one year after shipment.

Storage Buffer:

PBS with 50% Glycerol, 0.05% Proclin300, 0.5% BSA, pH 7.3.

Aliquoting is unnecessary for -20°C storage

For technical support and original validation data for this product please contact:

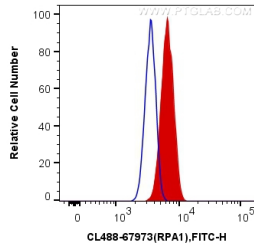
T: 4006900926

E: [Proteintech-CN@ptglab.com](mailto:Proteintech-CN@ptglab.com)

W: [ptgcn.com](http://ptgcn.com)

This product is exclusively available under Proteintech Group brand and is not available to purchase from any other manufacturer.

## Selected Validation Data



1X10<sup>6</sup> HeLa cells were intracellularly stained with 0.4 ug CoraLite® Plus 488 Anti-Human RPA1 (CL488-67973, Clone:1G3F11) (red), or 0.4 ug Control Antibody. Cells were fixed and permeabilized with Transcription Factor Staining Buffer Kit (PF00011).