

For Research Use Only

# CoraLite® Plus 488-conjugated ASNS Monoclonal antibody

Catalog Number:CL488-68004



## Basic Information

Catalog Number:

CL488-68004

Size:

1000 µg/ml

Source:

Mouse

Isotype:

IgG1

Immunogen Catalog Number:

AG6817

GenBank Accession Number:

BC014621

GeneID (NCBI):

440

UNIPROT ID:

P08243

Full Name:

asparagine synthetase

Calculated MW:

64 kDa

Observed MW:

55-64 kDa

Purification Method:

Protein G purification

CloneNo.:

1C3D3

Recommended Dilutions:

WB 1:1000-1:4000

IF/ICC 1:50-1:500

Excitation/Emission maxima  
wavelengths:

493 nm / 522 nm

## Applications

Tested Applications:

WB, IF/ICC

Species Specificity:

human

Positive Controls:

WB : LNCaP cells, K-562 cells

IF/ICC : SH-SY5Y cells,

## Background Information

Asparagine synthetase [glutamine-hydrolyzing](ASNS) is also named as TS11. The asparagine synthetase gene, encoding the enzyme that catalyzes the synthesis of asparagine and glutamate using glutamine and aspartate, is a gene for which transcription is highly regulated by the nutritional status of the cell(PMID:15385533). ASNS has some isoforms with the MW of 55-64 kDa.

## Storage

Storage:

Store at -20°C. Avoid exposure to light. Stable for one year after shipment.

Storage Buffer:

PBS with 50% Glycerol, 0.05% Proclin300, 0.5% BSA, pH 7.3.

Aliquoting is unnecessary for -20°C storage

For technical support and original validation data for this product please contact:

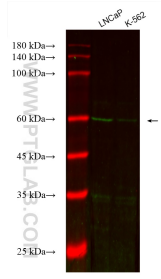
T: 4006900926

E: Proteintech-CN@ptglab.com

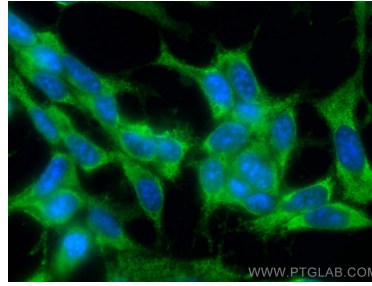
W: ptgcn.com

This product is exclusively available under Proteintech Group brand and is not available to purchase from any other manufacturer.

## Selected Validation Data



Various lysates were subjected to SDS PAGE followed by western blot with CL488-68004 (ASNS antibody) at dilution of 1:2000 incubated at room temperature for 1.5 hours.



Immunofluorescent analysis of (-20°C Ethanol) fixed SH-SY5Y cells using CoraLite® Plus 488 ASNS antibody (CL488-68004, Clone: 1C3D3) at dilution of 1:200.