

For Research Use Only

# CoraLite® Plus 488-conjugated MAN1B1 Monoclonal antibody



Catalog Number: CL488-68121

## Basic Information

Catalog Number:

CL488-68121

Size:

1000 µg/ml

Source:

Mouse

Isotype:

IgG2b

Immunogen Catalog Number:

AG28302

GenBank Accession Number:

BC002953

GeneID (NCBI):

11253

UNIPROT ID:

Q9UKM7

Full Name:

mannosidase, alpha, class 1B,  
member 1

Calculated MW:

80 kDa

Observed MW:

80 kDa

Purification Method:

Protein A purification

CloneNo.:

3C9F10

Recommended Dilutions:

IF/ICC 1:50-1:500

Excitation/Emission maxima  
wavelengths:

493 nm / 522 nm

## Applications

Tested Applications:

IF/ICC

Species Specificity:

Human

Positive Controls:

IF/ICC : U2OS cells,

## Background Information

MAN1B1, also known as ERMAN1, MANA-ER, belongs to the glycosyl hydrolase 47 family. MAN1B1 is involved in glycoprotein quality control targeting of misfolded glycoproteins for degradation, specifically converting Man9GlcNAc to Man8GlcNAc isomer B. At high enzyme concentrations, it further trims the carbohydrates to Man5-6GlcNAc2 (PMID: 18003979). Mutations in MAN1B1 cause autosomal-recessive intellectual disability. This gene has been associated with Rafiq syndrome (PMID: 21763484).

## Storage

Storage:

Store at -20°C. Avoid exposure to light.

Storage Buffer:

PBS with 50% Glycerol, 0.05% Proclin300, 0.5% BSA, pH 7.3.

Aliquoting is unnecessary for -20°C storage

For technical support and original validation data for this product please contact:

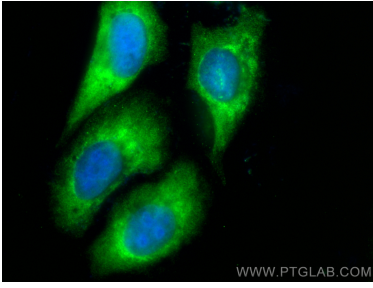
T: 4006900926

E: [Proteintech-CN@ptglab.com](mailto:Proteintech-CN@ptglab.com)

W: [ptgcn.com](http://ptgcn.com)

This product is exclusively available under Proteintech Group brand and is not available to purchase from any other manufacturer.

## Selected Validation Data



Immunofluorescent analysis of (-20°C Ethanol) fixed U2OS cells using CoraLite® Plus 488 MAN1B1 antibody (CL488-68121, Clone: 3C9F10) at dilution of 1:200.