

For Research Use Only

CoraLite® Plus 488-conjugated PSMA8 Monoclonal antibody



Catalog Number: CL488-68123

Basic Information

Catalog Number:

CL488-68123

Size:

1000 µg/ml

Source:

Mouse

Isotype:

IgG2a

Immunogen Catalog Number:

AG5138

GenBank Accession Number:

BC042820

GeneID (NCBI):

143471

UNIPROT ID:

Q8TAA3

Full Name:

proteasome (prosome, macropain)
subunit, alpha type, 8

Calculated MW:

29 kDa

Observed MW:

28 kDa

Purification Method:

Protein A purification

CloneNo.:

2G2G3

Recommended Dilutions:

IF/ICC 1:50-1:500

Excitation/Emission maxima
wavelengths:

493 nm / 522 nm

Applications

Tested Applications:

IF/ICC

Species Specificity:

Human, mouse, rat, pig, rabbit

Positive Controls:

IF/ICC : HepG2 cells,

Background Information

1

Storage

Storage:

Store at -20°C. Avoid exposure to light. Stable for one year after shipment.

Storage Buffer:

PBS with 50% Glycerol, 0.05% Proclin300, 0.5% BSA, pH 7.3.

Aliquoting is unnecessary for -20°C storage

For technical support and original validation data for this product please contact:

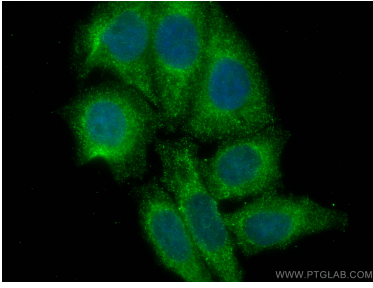
T: 4006900926

E: Proteintech-CN@ptglab.com

W: ptgcn.com

This product is exclusively available under Proteintech Group brand and is not available to purchase from any other manufacturer.

Selected Validation Data



Immunofluorescent analysis of (4% PFA) fixed HepG2 cells using CoraLite® Plus 488 PSMA8 antibody (CL488-68123, Clone: 2G2G3) at dilution of 1:200.