

For Research Use Only

CoraLite® Plus 488-conjugated PLA2G4A Monoclonal antibody



Catalog Number: **CL488-68133**

Basic Information

Catalog Number:

CL488-68133

Size:

1000 µg/ml

Source:

Mouse

Isotype:

IgG1

Immunogen Catalog Number:

AG32674

GenBank Accession Number:

BC114340

GeneID (NCBI):

5321

UNIPROT ID:

P47712

Full Name:

phospholipase A2, group IVA
(cytosolic, calcium-dependent)

Calculated MW:

749 aa, 85 kDa

Observed MW:

85-100 kDa

Purification Method:

Protein G purification

CloneNo.:

2D10H8

Recommended Dilutions:

IF/ICC 1:50-1:500

Excitation/Emission maxima
wavelengths:

493 nm / 522 nm

Applications

Tested Applications:

IF/ICC

Species Specificity:

Human

Positive Controls:

IF/ICC : HeLa cells,

Background Information

PLA2G4A, also named cPLA2 (cytosolic phospholipase A2), is a highly conserved and widely expressed enzyme that can promote lipid mediator production. It is present in the cytosol of resting cells and upon activation by a variety of agonists, undergoes Ca⁺⁺-directed translocation to perinuclear membranes. PLA2G4A plays a major role in membrane lipid remodeling and biosynthesis of lipid mediators of the inflammatory response. It has been reported that the activity and expression levels of PLA2G4A are upregulated in several neurodegenerative diseases. It is a 749 amino acid, 85 kDa protein that migrates at 100-112 kDa in polyacrylamide gels (PMID: 17459165).

Storage

Storage:

Store at -20°C. Avoid exposure to light. Stable for one year after shipment.

Storage Buffer:

PBS with 50% Glycerol, 0.05% Proclin300, 0.5% BSA, pH 7.3.

Aliquoting is unnecessary for -20°C storage

For technical support and original validation data for this product please contact:

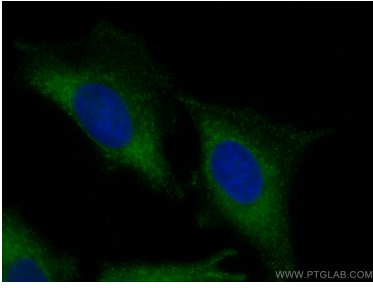
T: 4006900926

E: Proteintech-CN@ptglab.com

W: ptgcn.com

This product is exclusively available under Proteintech Group brand and is not available to purchase from any other manufacturer.

Selected Validation Data



Immunofluorescent analysis of (-20°C Methanol) fixed HeLa cells using CoraLite® Plus 488 PLA2G4A antibody (CL488-68133, Clone: 2D10H8) at dilution of 1:200.