

For Research Use Only

CoraLite® Plus 488-conjugated TOLLIP Monoclonal antibody



Catalog Number: CL488-68170

Basic Information

Catalog Number: CL488-68170	GenBank Accession Number: BC012057	Purification Method: Protein G purification
Size: 1000 µg/ml	GeneID (NCBI): 54472	CloneNo.: 1B3C4
Source: Mouse	UNIPROT ID: Q9HOE2	Excitation/Emission maxima wavelengths: 493 nm / 522 nm
Isotype: IgG1	Full Name: toll interacting protein	
Immunogen Catalog Number: AG32731	Calculated MW: 30 kDa	
	Observed MW: 30 kDa	

Applications

Tested Applications:
FC (Intra)

Species Specificity:
Human, mouse, rat

Background Information

TOLLIP (Toll interacting protein), is an inhibitory adaptor protein. Tollip is a negative regulator of IL-1R and Toll-like receptors signalling pathway, involved in inflammatory immune response and inhibiting IRAK1 phosphorylation and kinase activity (PMID:11441107, PMID:10854325, PMID:11751856). The TOLLIP-dependent selective autophagy pathway plays a role in clearance of cytotoxic polyQ proteins aggregates (PubMed:25042851).

Storage

Storage:
Store at -20°C. Avoid exposure to light. Stable for one year after shipment.

Storage Buffer:
PBS with 50% Glycerol, 0.05% Proclin300, 0.5% BSA, pH 7.3.

Aliquoting is unnecessary for -20°C storage

For technical support and original validation data for this product please contact:

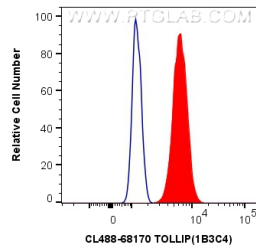
T: 4006900926

E: Proteintech-CN@ptglab.com

W: ptgcn.com

This product is exclusively available under Proteintech Group brand and is not available to purchase from any other manufacturer.

Selected Validation Data



1X10⁶ Jurkat cells were intracellularly stained with 0.8 ug CoraLite® Plus 488 Anti-Human TOLLIP (CL488-68170, Clone:1B3C4) (red), or 0.8 ug CoraLite® Plus 488 Mouse IgG1 Isotype Control (MOPC-21) (CL488-65124, Clone: MOPC-21) (blue). Cells were fixed with 4% PFA and permeabilized with Flow Cytometry Perm Buffer (PF00011-C).