

For Research Use Only

# CoraLite® Plus 488-conjugated LETM1 Monoclonal antibody



Catalog Number: CL488-68208

Featured Product

## Basic Information

Catalog Number:

CL488-68208

Size:

1000 µg/ml

Source:

Mouse

Isotype:

IgG1

Immunogen Catalog Number:

AG8851

GenBank Accession Number:

BC021208

GeneID (NCBI):

3954

UNIPROT ID:

O95202

Full Name:

leucine zipper-EF-hand containing transmembrane protein 1

Calculated MW:

739 aa, 83 kDa

Observed MW:

83 kDa

Purification Method:

Protein G purification

CloneNo.:

2B9B9

Recommended Dilutions:

IF/ICC 1:50-1:500

Excitation/Emission maxima wavelengths:

493 nm / 522 nm

## Applications

Tested Applications:

IF/ICC

Species Specificity:

Human, rat

Positive Controls:

IF/ICC : HeLa cells,

## Background Information

LETM1 is a mitochondrial inner membrane protein. It functions to maintain the mitochondrial tubular shapes and is required for normal mitochondrial morphology and cellular viability. It served as an anchor protein for complex formation between mitochondria and ribosome, and regulated mitochondrial biogenesis. It was also identified in Wolf-Hirschhorn syndrome, and was deleted in nearly all patients with the syndrome. A recent study determined that adenovirus-mediated LETM1 may provide a useful target for designing lung tumor prevention and treatment.

## Storage

Storage:

Store at -20°C. Avoid exposure to light. Stable for one year after shipment.

Storage Buffer:

PBS with 50% Glycerol, 0.05% Proclin300, 0.5% BSA, pH 7.3.

Aliquoting is unnecessary for -20°C storage

For technical support and original validation data for this product please contact:

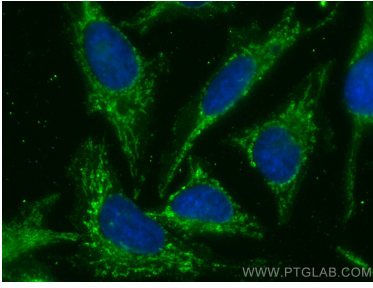
T: 4006900926

E: [Proteintech-CN@ptglab.com](mailto:Proteintech-CN@ptglab.com)

W: [ptgcn.com](http://ptgcn.com)

This product is exclusively available under Proteintech Group brand and is not available to purchase from any other manufacturer.

## Selected Validation Data



Immunofluorescent analysis of (-20°C Methanol) fixed HeLa cells using CoraLite® Plus 488 LETM1 antibody (CL488-68208, Clone: 2B9B9) at dilution of 1:200.