

For Research Use Only

CoraLite® Plus 488-conjugated NF90/ILF3 Monoclonal antibody

Catalog Number:CL488-68213



Basic Information

Catalog Number:

CL488-68213

Size:

1000 µg/ml

Source:

Mouse

Isotype:

IgG1

Immunogen Catalog Number:

AG30868

GenBank Accession Number:

BC064836

GeneID (NCBI):

3609

UNIPROT ID:

Q12906

Full Name:

interleukin enhancer binding factor 3,

90kDa

Calculated MW:

894 aa, 95 kDa

Observed MW:

90 kDa, 110 kDa

Purification Method:

Protein G purification

CloneNo.:

2H10G3

Recommended Dilutions:

IF/ICC 1:50-1:500

Excitation/Emission maxima

wavelengths:

493 nm / 522 nm

Applications

Tested Applications:

IF/ICC

Species Specificity:

human, mouse, rat

Positive Controls:

IF/ICC : A431 cells,

Background Information

Storage

Storage:

Store at -20°C. Avoid exposure to light. Stable for one year after shipment.

Storage Buffer:

PBS with 50% Glycerol, 0.05% Proclin300, 0.5% BSA, pH 7.3.

Aliquoting is unnecessary for -20°C storage

For technical support and original validation data for this product please contact:

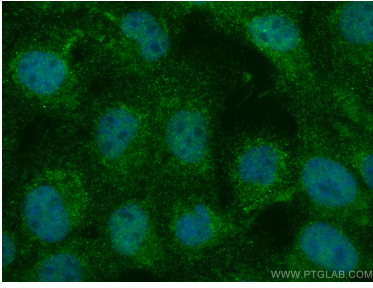
T: 4006900926

E: Proteintech-CN@ptglab.com

W: ptgcn.com

This product is exclusively available under Proteintech Group brand and is not available to purchase from any other manufacturer.

Selected Validation Data



Immunofluorescent analysis of (4% PFA) fixed A431 cells using CoraLite® Plus 488 NF90/1LF3 antibody (CL488-68213, Clone: 2H10G3) at dilution of 1:200.