

For Research Use Only

CoraLite® Plus 488-conjugated calcyphosine Monoclonal antibody

Catalog Number:CL488-68225



Basic Information

Catalog Number:

CL488-68225

Size:

1000 µg/ml

Source:

Mouse

Isotype:

IgG1

Immunogen Catalog Number:

AG10330

GenBank Accession Number:

BC080599

GeneID (NCBI):

828

UNIPROT ID:

Q13938

Full Name:

calcyphosine

Calculated MW:

189 aa, 21 kDa

Observed MW:

21 kDa

Purification Method:

Protein G purification

CloneNo.:

2B7D1

Recommended Dilutions:

IF/ICC 1:50-1:500

Excitation/Emission maxima

wavelengths:

493 nm / 522 nm

Applications

Tested Applications:

IF/ICC

Species Specificity:

human, pig, rabbit

Positive Controls:

IF/ICC : U-251 cells,

Background Information

calcyphosine is a calcium-binding protein, which may play a role in the regulation of ion transport. Calcyphosine (CAPS) was initially identified in the canine thyroid but has also been detected in humans and other mammals. CAPS synthesis is increased by thyroid - stimulating hormone and cAMP analogs that promote cell proliferation and maintain cell differentiation. Recently, CAPS was found to be involved in many kinds of tumor.

Storage

Storage:

Store at -20°C. Avoid exposure to light. Stable for one year after shipment.

Storage Buffer:

PBS with 50% Glycerol, 0.05% Proclin300, 0.5% BSA, pH 7.3.

Aliquoting is unnecessary for -20°C storage

For technical support and original validation data for this product please contact:

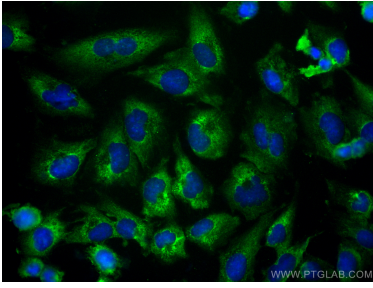
T: 4006900926

E: Proteintech-CN@ptglab.com

W: ptgcn.com

This product is exclusively available under Proteintech Group brand and is not available to purchase from any other manufacturer.

Selected Validation Data



Immunofluorescent analysis of (-20°C Ethanol) fixed U-251 cells using CoraLite® Plus 488 calyphosine antibody (CL488-68225, Clone: 2B7D1) at dilution of 1:200.