

For Research Use Only

CoraLite® Plus 488-conjugated NDUFS1 Monoclonal antibody



Catalog Number: **CL488-68253**

Basic Information

Catalog Number:

CL488-68253

Size:

1000 µg/ml

Source:

Mouse

Isotype:

IgG1

Immunogen Catalog Number:

AG3135

GenBank Accession Number:

BC030833

GeneID (NCBI):

4719

UNIPROT ID:

P28331

Full Name:

NADH dehydrogenase (ubiquinone)
Fe-S protein 1, 75kDa (NADH-
coenzyme Q reductase)

Calculated MW:

727 aa, 79 kDa

Observed MW:

68-81 kDa

Purification Method:

Protein G purification

CloneNo.:

3H5E8

Recommended Dilutions:

IF 1:50-1:500

Excitation/Emission maxima

wavelengths:

493 nm / 522 nm

Applications

Tested Applications:

IF/ICC

Species Specificity:

Human, Mouse, Rat, Pig, Rabbit

Positive Controls:

IF : HepG2 cells,

Background Information

The multisubunit NADH:ubiquinone oxidoreductase (75 kDa subunit, mitochondrial)(NDUFS1) is the first enzyme complex in the electron transport chain of mitochondria. It is also named as Complex I-75kD. By use of chaotropic agents, complex I can be fragmented into 3 different fractions: a flavoprotein fraction, an iron-sulfur protein (IP) fraction, and a hydrophobic protein (HP) fraction. NDUFS1 is the largest subunit of complex I and it is a component of the iron-sulfur (IP) fragment of the enzyme. NDUFS1 has some isoforms with the molecular mass of 68-81 kDa.

Storage

Storage:

Store at -20°C. Avoid exposure to light. Stable for one year after shipment.

Storage Buffer:

PBS with 50% Glycerol, 0.05% Proclin300, 0.5% BSA, pH 7.3.

Aliquoting is unnecessary for -20°C storage

For technical support and original validation data for this product please contact:

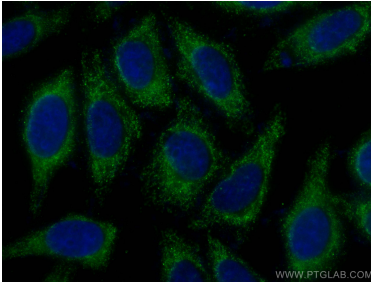
T: 4006900926

E: Proteintech-CN@ptglab.com

W: ptgcn.com

This product is exclusively available under Proteintech Group brand and is not available to purchase from any other manufacturer.

Selected Validation Data



Immunofluorescent analysis of (-20°C Ethanol)
fixed HepG2 cells using CoraLite® Plus 488
NDUFS1 antibody (CL488-68253, Clone: 3H5E8) at
dilution of 1:200.