

For Research Use Only

CoraLite® Plus 488-conjugated ZER1 Monoclonal antibody



Catalog Number: CL488-68258

Basic Information

Catalog Number:

CL488-68258

Size:

1000 µg/ml

Source:

Mouse

Isotype:

IgG2a

Immunogen Catalog Number:

AG10040

GenBank Accession Number:

BC052563

GeneID (NCBI):

10444

UNIPROT ID:

Q7Z7L7

Full Name:

zer-1 homolog (C. elegans)

Calculated MW:

766 aa, 88 kDa

Observed MW:

80-88 kDa

Purification Method:

Protein A purification

CloneNo.:

1H9G7

Recommended Dilutions:

IF/ICC 1:50-1:500

Excitation/Emission maxima

wavelengths:

493 nm / 522 nm

Applications

Tested Applications:

IF/ICC

Species Specificity:

Human

Positive Controls:

IF/ICC : HepG2 cells,

Background Information

Storage

Storage:

Store at -20°C. Avoid exposure to light. Stable for one year after shipment.

Storage Buffer:

PBS with 50% Glycerol, 0.05% Proclin300, 0.5% BSA, pH 7.3.

Aliquoting is unnecessary for -20°C storage

For technical support and original validation data for this product please contact:

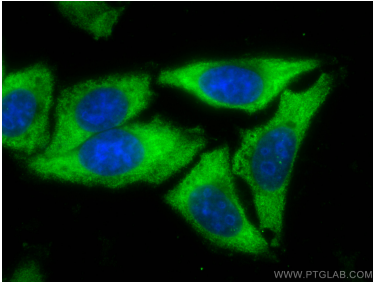
T: 4006900926

E: Proteintech-CN@ptglab.com

W: ptgcn.com

This product is exclusively available under Proteintech Group brand and is not available to purchase from any other manufacturer.

Selected Validation Data



Immunofluorescent analysis of (-20°C Ethanol) fixed HepG2 cells using CoraLite® Plus 488 ZER1 antibody (CL488-68258, Clone: 1H9G7) at dilution of 1:100.