

For Research Use Only

CoraLite® Plus 488-conjugated MAP4 Monoclonal antibody

Catalog Number:CL488-68271



Basic Information

Catalog Number:

CL488-68271

Size:

1000 µg/ml

Source:

Mouse

Isotype:

IgG1

Immunogen Catalog Number:

AG1741

GenBank Accession Number:

BC012794

GeneID (NCBI):

4134

UNIPROT ID:

P27816

Full Name:

microtubule-associated protein 4

Calculated MW:

121 kDa

Observed MW:

210-240 kDa

Purification Method:

Protein G purification

CloneNo.:

1C1A6

Recommended Dilutions:

IF/ICC 1:50-1:500

Excitation/Emission maxima
wavelengths:

493 nm / 522 nm

Applications

Tested Applications:

IF/ICC

Species Specificity:

human

Positive Controls:

IF/ICC : A431 cells,

Background Information

MAP4 is a ubiquitously expressed microtubule-associated protein involved in the organization and stabilization of microtubules during various cellular activities. Recently it has been reported that expression of MAP4 was upregulated in esophageal squamous cell carcinoma (ESCC). MAP4 has been considered as an independent prognostic factor for ESCC. The predicted molecular weight of MAP4 is about 120 kDa, while higher molecular weight around 200-250 kDa is usually observed in WB test, which may be the result of glycosylation. (26876215, 8647865)

Storage

Storage:

Store at -20°C. Avoid exposure to light. Stable for one year after shipment.

Storage Buffer:

PBS with 50% Glycerol, 0.05% Proclin300, 0.5% BSA, pH 7.3.

Aliquoting is unnecessary for -20°C storage

For technical support and original validation data for this product please contact:

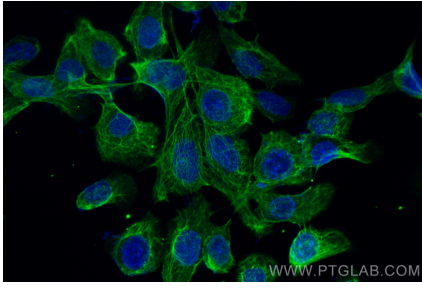
T: 4006900926

E: Proteintech-CN@ptglab.com

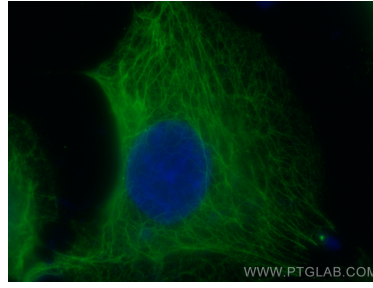
W: ptgcn.com

This product is exclusively available under Proteintech Group brand and is not available to purchase from any other manufacturer.

Selected Validation Data



Immunofluorescent analysis of (-20°C Ethanol) fixed A431 cells using CoraLite® Plus 488 MAP4 antibody (CL488-68271, Clone: 1C1A6) at dilution of 1:200.



Immunofluorescent analysis of (-20°C Ethanol) fixed A431 cells using CoraLite® Plus 488 MAP4 antibody (CL488-68271, Clone: 1C1A6) at dilution of 1:200.