

For Research Use Only

# CoraLite® Plus 488-conjugated CRTAC1 Monoclonal antibody



Catalog Number: CL488-68276

## Basic Information

<b>Catalog Number:</b> CL488-68276	<b>GenBank Accession Number:</b> BC034245	<b>Purification Method:</b> Protein A purification
<b>Size:</b> 1000 µg/ml	<b>GeneID (NCBI):</b> 55118	<b>CloneNo.:</b> 2A11E2
<b>Source:</b> Mouse	<b>UNIPROT ID:</b> Q9NQ79	<b>Recommended Dilutions:</b> IF/ICC 1:50-1:500
<b>Isotype:</b> IgG2b	<b>Full Name:</b> cartilage acidic protein 1	<b>Excitation/Emission maxima wavelengths:</b> 493 nm / 522 nm
<b>Immunogen Catalog Number:</b> AG32813	<b>Calculated MW:</b> 661 aa, 71 kDa	
	<b>Observed MW:</b> 71 kDa	

## Applications

<b>Tested Applications:</b> IF/ICC	<b>Positive Controls:</b> IF/ICC : HeLa cells,
<b>Species Specificity:</b> human, mouse, rat, pig, rabbit	

## Background Information

CRTAC1 (cartilage acidic protein 1) is also named as ASPIC1 and CEP68. CRTAC1 is an extracellular matrix protein of human chondrogenic tissue. CRTAC1 promotes cell proliferation, migration and extracellular matrix regeneration and remodeling in primary human fibroblasts (PMID:32084494). CRTAC1 expression is decreased in tissue samples of bladder urothelial carcinoma (PMID:34818994). CRTAC1 overexpression promotes the pyroptosis of human lens epithelial cells by facilitating the reactive oxygen species (ROS) production in the formation of cataract (PMID:32838966). CRTAC1 was the most compelling and robust biomarker for osteoarthritis severity and progression (PMID:35924962).

## Storage

**Storage:**  
Store at -20°C. Avoid exposure to light. Stable for one year after shipment.  
**Storage Buffer:**  
PBS with 50% Glycerol, 0.05% Proclin300, 0.5% BSA, pH 7.3.  
Aliquoting is unnecessary for -20°C storage

For technical support and original validation data for this product please contact:

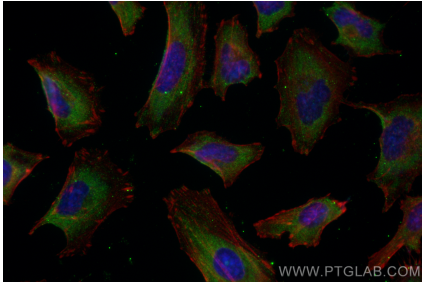
T: 4006900926

E: [Proteintech-CN@ptglab.com](mailto:Proteintech-CN@ptglab.com)

W: [ptgcn.com](http://ptgcn.com)

**This product is exclusively available under Proteintech Group brand and is not available to purchase from any other manufacturer.**

## Selected Validation Data



Immunofluorescent analysis of (-20°C Ethanol) fixed HeLa cells using CoraLite® Plus 488 CRTAC1 antibody (CL488-68276, Clone: 2A11E2) at dilution of 1:200.