

For Research Use Only

# CoraLite® Plus 488-conjugated PNPT1 Monoclonal antibody

Catalog Number: CL488-68309



## Basic Information

Catalog Number:

CL488-68309

Concentration:

1000 µg/ml

Source:

Mouse

Isotype:

IgG1

Immunogen Catalog Number:

AG6290

GenBank Accession Number:

BC053660

GeneID (NCBI):

87178

UNIPROT ID:

Q8TCS8

Full Name:

polyribonucleotide  
nucleotidyltransferase 1

Calculated MW:

86 kDa

Observed MW:

86 kDa

Purification Method:

Protein G purification

CloneNo.:

3F2A1

Recommended Dilutions:

IF/ICC 1:50-1:500

Excitation/Emission maxima  
wavelengths:

493 nm / 522 nm

## Applications

Tested Applications:

IF/ICC

Species Specificity:

human, mouse, rat

Positive Controls:

IF/ICC : A431 cells,

## Background Information

PNPT1 (polynucleotide phosphorylase1; also known as PNPASE) localizes in the mitochondrial intermembrane and regulates RNA import into mitochondria (20691904). PNPT1 is also involved in mRNA degradation. As a type I IFN-inducible gene, PNPT1 plays an essential role in mediating IFN-mediated inflammatory processes (17804700). Recently mutation in PNPT1 has been reported to cause hereditary hearing loss (23084290). This antibody detected the endogenous PNPT1 around 80 kDa in mouse brain.

## Storage

Storage:

Store at -20°C. Avoid exposure to light. Stable for one year after shipment.

Storage Buffer:

PBS with 50% Glycerol, 0.05% Proclin300, 0.5% BSA, pH 7.3.

Aliquoting is unnecessary for -20°C storage

For technical support and original validation data for this product please contact:

T: 4006900926

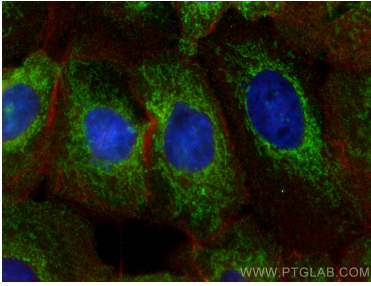
E: [Proteintech-CN@ptglab.com](mailto:Proteintech-CN@ptglab.com)

W: [ptgcn.com](http://ptgcn.com)

This product is exclusively available under Proteintech Group brand and is not available to purchase from any other manufacturer.

---

## Selected Validation Data



Immunofluorescent analysis of (4% PFA) fixed A431 cells using CoraLite® Plus 488 PNPT1 antibody (CL488-68309, Clone: 3F2A1 ) at dilution of 1:100, CL594-Phalloidin (red).