

For Research Use Only

# CoraLite® Plus 488-conjugated STUB1 Monoclonal antibody



Catalog Number:CL488-68407

## Basic Information

Catalog Number:

CL488-68407

Size:

1000 µg/ml

Source:

Mouse

Isotype:

IgG1

GenBank Accession Number:

NM\_005861

GeneID (NCBI):

10273

UNIPROT ID:

Q9UNE7

Full Name:

STIP1 homology and U-box  
containing protein 1

Calculated MW:

35 kDa

Observed MW:

35 kDa

Purification Method:

Protein G purification

CloneNo.:

2E6B9

Recommended Dilutions:

IF/ICC 1:50-1:500

Excitation/Emission maxima  
wavelengths:

493 nm / 522 nm

## Applications

Tested Applications:

IF/ICC

Species Specificity:

Human, rat

Positive Controls:

IF/ICC : MCF-7 cells,

## Background Information

STUB1, also named as CHIP, SDCCAG7, UBOX1 and NY-CO-7, is a E3 ubiquitin-protein ligase which targets misfolded chaperone substrates towards proteasomal degradation. STUB1/CHIP modulates the activity of several chaperone complexes, including Hsp70, Hsc70 and Hsp90. It mediates transfer of non-canonical short ubiquitin chains to HSPA8 that have no effect on HSPA8 degradation. STUB1/CHIP mediates polyubiquitination of CYP3A4. (PMID:10330192) CHIP/STUB1 strongly reduced keratin aggregates through increased degradation of mutant K14. (PMID:20151404) STUB1/CHIP regulates NAD(P)H:quinone oxidoreductase 1 (NQO1) accumulation in aged brain, a process impaired in certain Alzheimer patients.(PMID:21220432) This antibody is specific to STUB1.

## Storage

Storage:

Store at -20°C. Avoid exposure to light. Stable for one year after shipment.

Storage Buffer:

PBS with 50% Glycerol, 0.05% Proclin300, 0.5% BSA, pH 7.3.

Aliquoting is unnecessary for -20°C storage

For technical support and original validation data for this product please contact:

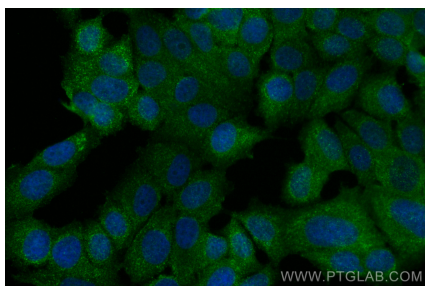
T: 4006900926

E: Proteintech-CN@ptglab.com

W: ptgcn.com

This product is exclusively available under Proteintech Group brand and is not available to purchase from any other manufacturer.

## Selected Validation Data



Immunofluorescent analysis of (4% PFA) fixed MCF-7 cells using CoraLite® Plus 488 STUB1 antibody (CL488-68407, Clone: 2E6B9) at dilution of 1:200.