

For Research Use Only

# CoraLite® Plus 488-conjugated MPI Monoclonal antibody



Catalog Number: CL488-68417

## Basic Information

Catalog Number:

CL488-68417

Size:

1000 µg/ml

Source:

Mouse

Isotype:

IgG1

Immunogen Catalog Number:

AG5475

GenBank Accession Number:

BC046357

GeneID (NCBI):

4351

UNIPROT ID:

P34949

Full Name:

mannose phosphate isomerase

Calculated MW:

47 kDa

Observed MW:

40-47 kDa

Purification Method:

Protein G purification

CloneNo.:

3B10A6

Recommended Dilutions:

IF/ICC 1:50-1:500

Excitation/Emission maxima

wavelengths:

493 nm / 522 nm

## Applications

Tested Applications:

IF/ICC

Species Specificity:

human, mouse, rat, pig

Positive Controls:

IF/ICC : NIH/3T3 cells,

## Background Information

MPI (mannose-6-phosphate isomerase) is also named as PMI 1 and belongs to the mannose-6-phosphate isomerase type 1 family. It is a zinc metalloenzyme that catalyzes the reversible isomerization of mannose-6-phosphate and fructose-6-phosphate. MPI plays a critical role in maintaining the supply of D-mannose derivatives, which are required for most glycosylation reactions. This protein has 2 isoforms produced by alternative splicing.

## Storage

Storage:

Store at -20°C. Avoid exposure to light. Stable for one year after shipment.

Storage Buffer:

PBS with 50% Glycerol, 0.05% Proclin300, 0.5% BSA, pH 7.3.

Aliquoting is unnecessary for -20°C storage

For technical support and original validation data for this product please contact:

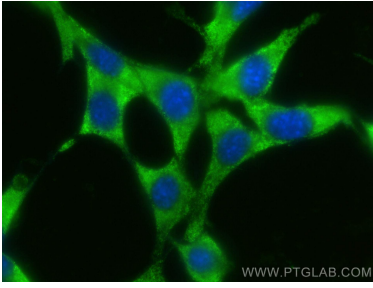
T: 4006900926

E: [Proteintech-CN@ptglab.com](mailto:Proteintech-CN@ptglab.com)

W: [ptgcn.com](http://ptgcn.com)

This product is exclusively available under Proteintech Group brand and is not available to purchase from any other manufacturer.

## Selected Validation Data



Immunofluorescent analysis of (-20°C Ethanol) fixed NIH/3T3 cells using CoraLite® Plus 488 MPI antibody (CL488-68417, Clone: 3B10A6) at dilution of 1:200.