

For Research Use Only

CoraLite® Plus 488-conjugated ATP6V1H Monoclonal antibody

Catalog Number:CL488-68425



Basic Information

Catalog Number:

CL488-68425

Size:

1000 µg/ml

Source:

Mouse

Isotype:

IgG1

Immunogen Catalog Number:

AG10130

GenBank Accession Number:

BC025275

GeneID (NCBI):

51606

UNIPROT ID:

Q9UI12

Full Name:

ATPase, H⁺ transporting, lysosomal
50/57kDa, V1 subunit H

Calculated MW:

483 aa, 56 kDa

Observed MW:

50 kDa

Purification Method:

Protein G purification

CloneNo.:

3G7B5

Recommended Dilutions:

IF/ICC 1:50-1:500

**Excitation/Emission maxima
wavelengths:**

493 nm / 522 nm

Applications

Tested Applications:

IF/ICC

Species Specificity:

human, mouse, rat, pig, rabbit

Positive Controls:

IF/ICC : HepG2 cells,

Background Information

The vacuolar-type H⁽⁺⁾-ATPase (V-ATPase) is responsible for the acidification of endosomes, lysosomes, and other intracellular organelles. It is also involved in hydrogen ion transport across the plasma membrane into the extracellular space. The V-ATPase is a multisubunit complex with cytosolic and transmembrane domains.

Storage

Storage:

Store at -20°C. Avoid exposure to light. Stable for one year after shipment.

Storage Buffer:

PBS with 50% Glycerol, 0.05% Proclin300, 0.5% BSA, pH 7.3.

Aliquoting is unnecessary for -20°C storage

For technical support and original validation data for this product please contact:

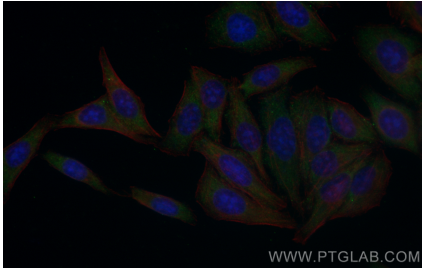
T: 4006900926

E: Proteintech-CN@ptglab.com

W: ptgcn.com

This product is exclusively available under Proteintech Group brand and is not available to purchase from any other manufacturer.

Selected Validation Data



Immunofluorescent analysis of (-20°C Ethanol) fixed HepG2 cells using CoraLite® Plus 488 ATP6V1H antibody (CL488-68425, Clone: 3G7B5) at dilution of 1:200.