

For Research Use Only

CoraLite® Plus 488-conjugated CD45 Recombinant antibody



Catalog Number: CL488-80297

Basic Information

Catalog Number: CL488-80297	GenBank Accession Number: BC014239	Purification Method: Protein A purification
Size: 1000 µg/ml	GeneID (NCBI): 5788	CloneNo.: 6019
Source: Rabbit	ENSEMBL Gene ID: ENSG0000081237	Recommended Dilutions: IF 1:50-1:500
Isotype: IgG	UNIPROT ID: P08575	Excitation/Emission maxima wavelengths: 493 nm / 522 nm
Immunogen Catalog Number: AG13712	Full Name: protein tyrosine phosphatase, receptor type, C	
	Calculated MW: 1304 aa, 147 kDa	
	Observed MW: 220-240 kDa	

Applications

Tested Applications: IF-P	Positive Controls: IF : mouse spleen tissue,
Species Specificity: Human, Rat, Mouse	

Background Information

CD45, also known as leukocyte common antigen (LCA), B220, and T200, is a 180-240 kD single chain type I membrane glycoprotein. It is a tyrosine phosphatase expressed on the plasma membrane of all hematopoietic cells, except erythrocytes and platelets. CD45 is a signaling molecule that regulates a variety of cellular processes including cell growth, differentiation, cell cycle, and oncogenic transformation. CD45 is one of the best negative selection markers for characterizing and/or isolating human mesenchymal stem cells from bone marrow and other sources. Along with the positive selection markers (such as CD29, CD44, CD90, CD105 and CD166), negative selection markers (such as CD34 and CD45) are used for MSC identification.

Storage

Storage:
Store at -20°C. Avoid exposure to light. Stable for one year after shipment.
Storage Buffer:
PBS with 50% Glycerol, 0.05% Proclin300, 0.5% BSA, pH 7.3.
Aliquoting is unnecessary for -20°C storage

For technical support and original validation data for this product please contact:

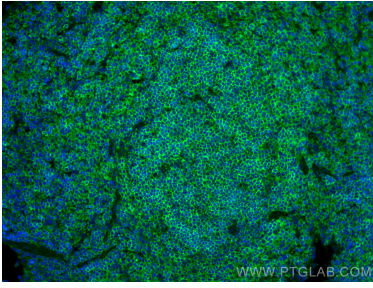
T: 4006900926

E: Proteintech-CN@ptglab.com

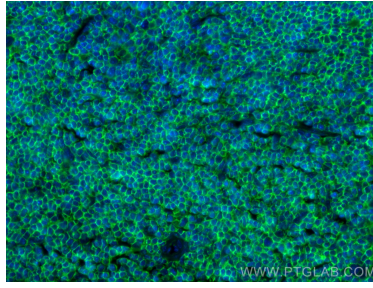
W: ptgcn.com

This product is exclusively available under Proteintech Group brand and is not available to purchase from any other manufacturer.

Selected Validation Data



Immunofluorescent analysis of (4% PFA) fixed paraffin-embedded mouse spleen tissue using CoraLite® Plus 488 CD45 antibody (CL488-80297, Clone: 6O19) at dilution of 1:200. Heat mediated antigen retrieval with Tris-EDTA buffer (pH 9.0).



Immunofluorescent analysis of (4% PFA) fixed paraffin-embedded mouse spleen tissue using CoraLite® Plus 488 CD45 antibody (CL488-80297, Clone: 6O19) at dilution of 1:200. Heat mediated antigen retrieval with Tris-EDTA buffer (pH 9.0).