

For Research Use Only

# CoraLite® Plus 488-conjugated PAX8 Recombinant antibody



Catalog Number: CL488-80756

## Basic Information

<b>Catalog Number:</b> CL488-80756	<b>GenBank Accession Number:</b> BC001060	<b>Purification Method:</b> Protein A purification
<b>Size:</b> 1000 µg/ml	<b>GeneID (NCBI):</b> 7849	<b>CloneNo.:</b> 6B14
<b>Source:</b> Rabbit	<b>UNIPROT ID:</b> Q06710	<b>Recommended Dilutions:</b> IF 1:200-1:800
<b>Isotype:</b> IgG	<b>Full Name:</b> paired box 8	<b>Excitation/Emission maxima wavelengths:</b> 493 nm / 522 nm
<b>Immunogen Catalog Number:</b> AG0306	<b>Calculated MW:</b> 48 kDa	
	<b>Observed MW:</b> 48 kDa, 58 kDa	

## Applications

<b>Tested Applications:</b> IF/ICC	<b>Positive Controls:</b> IF : SKOV-3 cells,
<b>Species Specificity:</b> Human, mouse	

## Background Information

PAX8 is a member of the paired box (PAX) family of transcription factors, typically containing a paired box domain and a paired-type homeodomain. It is expressed during organogenesis of the thyroid gland, kidney and Mullerian system. It is thought to regulate the expression of Wilms tumor suppressor (WT1) gene and mutations in PAX8 have been associated with Wilms tumor cells, thyroid and ovarian carcinomas. PAX8 is a useful marker in distinguishing ovarian carcinomas from mammary carcinomas (PMID: 18724243). PAX8 is expressed in a high percentage of ovarian serous, endometrioid, and clear cell carcinomas, but only rarely in primary ovarian mucinous adenocarcinoma.

## Storage

**Storage:**  
Store at -20°C. Avoid exposure to light. Stable for one year after shipment.  
**Storage Buffer:**  
PBS with 50% Glycerol, 0.05% Proclin300, 0.5% BSA, pH 7.3.  
**Aliquoting is unnecessary for -20°C storage**

For technical support and original validation data for this product please contact:

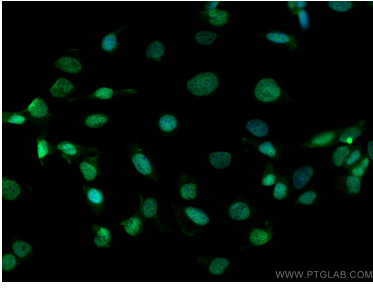
T: 4006900926

E: [Proteintech-CN@ptglab.com](mailto:Proteintech-CN@ptglab.com)

W: [ptgcn.com](http://ptgcn.com)

**This product is exclusively available under Proteintech Group brand and is not available to purchase from any other manufacturer.**

## Selected Validation Data



Immunofluorescent analysis of (4% PFA) fixed SKOV-3 cells using CoraLite® Plus 488 PAX8 antibody (CL488-80756, Clone: 6B14 ) at dilution of 1:400.