

For Research Use Only

CoraLite® Plus 488-conjugated c-MYC Recombinant antibody



Catalog Number:CL488-80845

Basic Information

Catalog Number: CL488-80845	GenBank Accession Number: BC000141	Purification Method: Protein A purification
Size: 1000 µg/ml	GeneID (NCBI): 4609	CloneNo.: 2B17
Source: Rabbit	UNIPROT ID: P01106	Recommended Dilutions: IF 1:50-1:500
Isotype: IgG	Full Name: v-myc myelocytomatosis viral oncogene homolog (avian)	Excitation/Emission maxima wavelengths: 493 nm / 522 nm
Immunogen Catalog Number: AG1263	Calculated MW: 49 kDa	
	Observed MW: 50-65 kDa	

Applications

Tested Applications: IF/ICC	Positive Controls: IF : HeLa cells,
Species Specificity: Human	

Background Information

MYC contains one basic helix-loop-helix (bHLH) domain. This protein is a multifunctional, nuclear phosphoprotein that plays a role in cell cycle progression, apoptosis and cellular transformation. It functions as a transcription factor that regulates transcription of specific target genes. It seems to activate the transcription of growth-related genes. It binds DNA in a non-specific manner, yet also specifically recognizes the core sequence 5'-CAC[GA]TG-3'. Mutations, overexpression, rearrangement and translocation of this gene have been associated with a variety of hematopoietic tumors, leukemias and lymphomas, including Burkitt lymphoma.

Storage

Storage:
Store at -20°C. Avoid exposure to light. Stable for one year after shipment.
Storage Buffer:
PBS with 50% Glycerol, 0.05% Proclin300, 0.5% BSA, pH 7.3.
Aliquoting is unnecessary for -20°C storage

For technical support and original validation data for this product please contact:

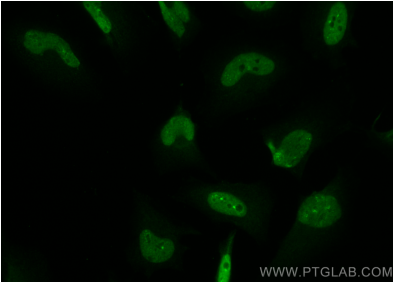
T: 4006900926

E: Proteintech-CN@ptglab.com

W: ptgcn.com

This product is exclusively available under Proteintech Group brand and is not available to purchase from any other manufacturer.

Selected Validation Data



Immunofluorescent analysis of (4% PFA) fixed HeLa cells using CoraLite® Plus 488 c-MYC antibody (CL488-80845, Clone: 2B17) at dilution of 1:200.