

For Research Use Only

CoraLite® Plus 488-conjugated CD206 Recombinant antibody



Catalog Number:CL488-81525

Basic Information

Catalog Number: CL488-81525	GenBank Accession Number: NM_002438	Purification Method: Protein A purification
Size: 1000 µg/ml	GeneID (NCBI): 4360	CloneNo.: 1G15
Source: Rabbit	UNIPROT ID: P22897	Recommended Dilutions: IF 1:50-1:500
Isotype: IgG	Full Name: mannose receptor, C type 1	Excitation/Emission maxima wavelengths: 493 nm / 522 nm
	Calculated MW: 166 kDa	
	Observed MW: 170 kDa	

Applications

Tested Applications: IF-P	Positive Controls: IF : human placenta tissue,
Species Specificity: Human, Pig	

Background Information

CD206, also named as MMR, CLEC13D and MRC1, is a type I membrane receptor that mediates the endocytosis of glycoproteins by macrophages. CD206 has been shown to bind high-mannose structures on the surface of potentially pathogenic viruses, bacteria, and fungi so that they can be neutralized by phagocytic engulfment. CD206 is a 170 kDa transmembrane protein which contains 5 domains: an amino-terminal cysteine-rich region, a fibronectin type II repeat, a series of eight tandem lectin-like carbohydrate recognition domains (responsible for the recognition of mannose and fucose), a transmembrane domain, and an intracellular carboxy-terminal tail. It is expressed on most tissue macrophages, in vitro derived dendritic cells, lymphatic and sinusoidal endothelia.

Storage

Storage:
Store at -20°C. Avoid exposure to light. Stable for one year after shipment.
Storage Buffer:
PBS with 50% Glycerol, 0.05% Proclin300, 0.5% BSA, pH 7.3.
Aliquoting is unnecessary for -20°C storage

For technical support and original validation data for this product please contact:

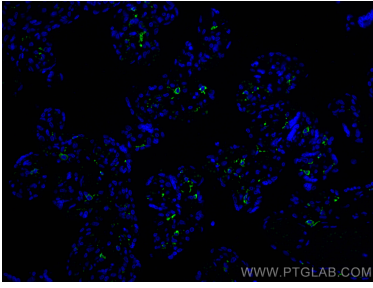
T: 4006900926

E: Proteintech-CN@ptglab.com

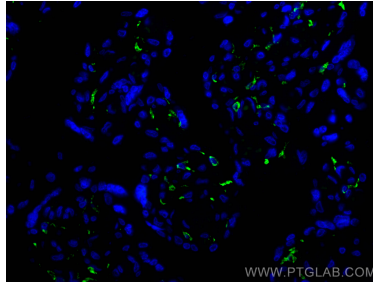
W: ptgcn.com

This product is exclusively available under Proteintech Group brand and is not available to purchase from any other manufacturer.

Selected Validation Data



Immunofluorescent analysis of (4% PFA) fixed paraffin-embedded human placenta tissue using CoraLite® Plus 488 CD206 antibody (CL488-81525, Clone: 1G15) at dilution of 1:200. Heat mediated antigen retrieval with Tris-EDTA buffer (pH 9.0).



Immunofluorescent analysis of (4% PFA) fixed paraffin-embedded human placenta tissue using CoraLite® Plus 488 CD206 antibody (CL488-81525, Clone: 1G15) at dilution of 1:200. Heat mediated antigen retrieval with Tris-EDTA buffer (pH 9.0).